

Product Information Sheet

COMMISSION DELEGATED REGULATION (EU) 2019/2015 with regard to energy labelling of light sources

Supplier's name or trade mark: Source

Supplier's address: SGD LTD, SGD LTD Unit 7/8 Ashbourne Business Centre Ballybin Road, Ashbourne, Co. Meath A84 YP58, Ireland.

Model identifier: STC MC WW

Type of light source:

Lighting technology used:	LED	Non-directional or directional:	NDLS
Light source cap-type (or other electric interface)	SMD 3528		
Mains or non-mains:	NMLS	Connected light source (CLS):	No
Colour-tuneable light source:	No	Envelope:	-
High luminance light source:	No		
Anti-glare shield:	No	Dimmable:	No

Product parameters

Parameter	Value	Parameter	Value
-----------	-------	-----------	-------

General product parameters:

Energy consumption in on-mode (kWh/1000 h), rounded up to the nearest integer	2	Energy efficiency class	G
Useful luminous flux (ϕ_{use}), indicating if it refers to the flux in a sphere (360°), in a wide cone (120°) or in a narrow cone (90°)	100 in Wide cone (120°)	Correlated colour temperature, rounded to the nearest 100 K, or the range of correlated colour temperatures, rounded to the nearest 100 K, that can be set	3 000
On-mode power (P_{on}), expressed in W	2,0	Standby power (P_{sb}), expressed in W and rounded to the second decimal	-
Networked standby power (P_{net}) for CLS, expressed in W and rounded to the second decimal	-	Colour rendering index, rounded to the nearest integer, or the range of CRI-values that can be set	84
Outer dimensions without separate control gear, light-	Height	121	Spectral power distribution in the range 250 nm to 800 nm, at full-load
	Width	50	
	Depth	50	
			See image in last page

ing control parts and non-lighting control parts, if any (millimetre)			
Claim of equivalent power ^(a)	-	If yes, equivalent power (W)	-
		Chromaticity coordinates (x and y)	0,440 0,403
Parameters for LED and OLED light sources:			
R9 colour rendering index value	0	Survival factor	-
the lumen maintenance factor	-		

(a) '-': not applicable;

(b) '-': not applicable;

Product Information Sheet

COMMISSION DELEGATED REGULATION (EU) 2019/2015 with regard to energy labelling of light sources

Supplier's name or trade mark: Source

Supplier's address: SGD Limited, Unit 7/8 Ashbourne Business Centre Ballybin Road, Ashbourne, Co. Meath A84 YP58, Ireland.

Model identifier: STC MC CW

Type of light source:

Lighting technology used:	LED	Non-directional or directional:	NDLS
Light source cap-type (or other electric interface)	SMD 3528		
Mains or non-mains:	NMLS	Connected light source (CLS):	No
Colour-tuneable light source:	No	Envelope:	-
High luminance light source:	No		
Anti-glare shield:	No	Dimmable:	No

Product parameters

Parameter	Value	Parameter	Value
-----------	-------	-----------	-------

General product parameters:

Energy consumption in on-mode (kWh/1000 h), rounded up to the nearest integer	2	Energy efficiency class	G
Useful luminous flux (ϕ_{use}), indicating if it refers to the flux in a sphere (360°), in a wide cone (120°) or in a narrow cone (90°)	100 in Wide cone (120°)	Correlated colour temperature, rounded to the nearest 100 K, or the range of correlated colour temperatures, rounded to the nearest 100 K, that can be set	6 400
On-mode power (P_{on}), expressed in W	2,0	Standby power (P_{sb}), expressed in W and rounded to the second decimal	-
Networked standby power (P_{net}) for CLS, expressed in W and rounded to the second decimal	-	Colour rendering index, rounded to the nearest integer, or the range of CRI-values that can be set	84
Outer dimensions without separate control gear, light-	Height	121	Spectral power distribution in the range 250 nm to 800 nm, at full-load
	Width	50	
	Depth	50	
			See image in last page

ing control parts and non-lighting control parts, if any (millimetre)			
Claim of equivalent power ^(a)	-	If yes, equivalent power (W)	-
		Chromaticity coordinates (x and y)	0,313 0,334
Parameters for LED and OLED light sources:			
R9 colour rendering index value	0	Survival factor	-
the lumen maintenance factor	-		

(a) '-': not applicable;

(b) '-': not applicable;



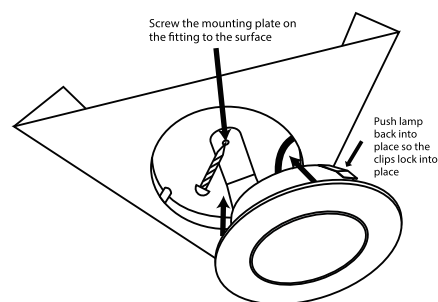
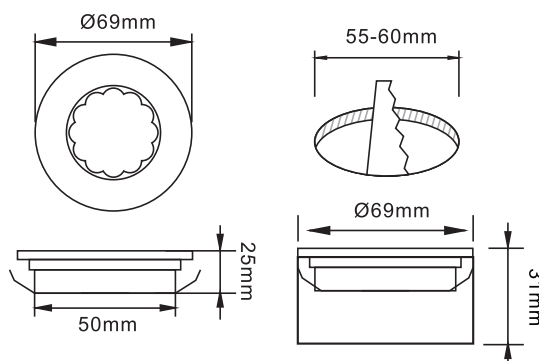
User Manual

STC-WH-WW / STC-WH-CW
STC-MC-WW / STC-MC-CW

FEATURE:

- No UV or IR radiation.
- High-brightness LED
- Zinc alloy Housing
- LEDQTY: 27pcs
- 30000 hours long life span
- Color Temperature
 WW: 3000K CW: 6000K
 Low temperature rising, less than 20°C
- Less than 7% light decay in 6,000 hours testing
- 90° Beaming Angle

Size:

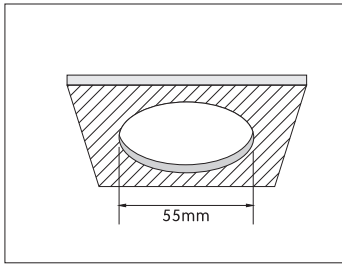


Electrical/Optical Characteristics at TA=25°C

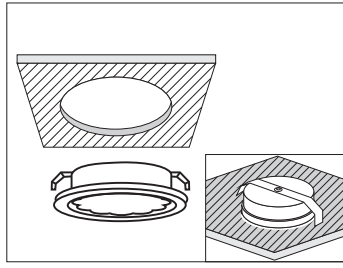
Item No.	Power (W)	Voltage / Frequency	Color Temperature	Beaming Angle (Degrees)	IP Rating	Luminous Flux
STC-WH-WW	1.5	AC170-240V/50-60Hz	3000K	90°	IP20	100Lm
STC-WH-CW	1.5	AC170-240V/50-60Hz	6000K	90°	IP20	100Lm

- Tolerance of all the optical data is ±15%
- Exceeding the maximum voltage will lead to overload, which will shorten the life-span or even destroy the product
- Exceeding the maximum working temperature will shorten the life-span or even destroy the product.

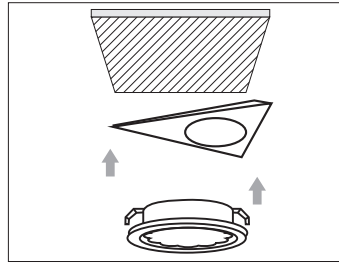
Installation



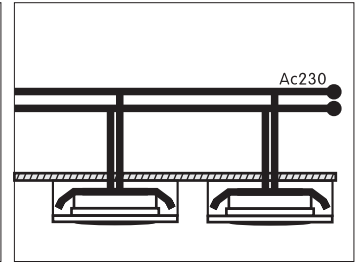
1. Drill a hole, which diameter is 55mm.



2. Push the lamp into the hole and fixed.



3. Surface mounting of light fitting



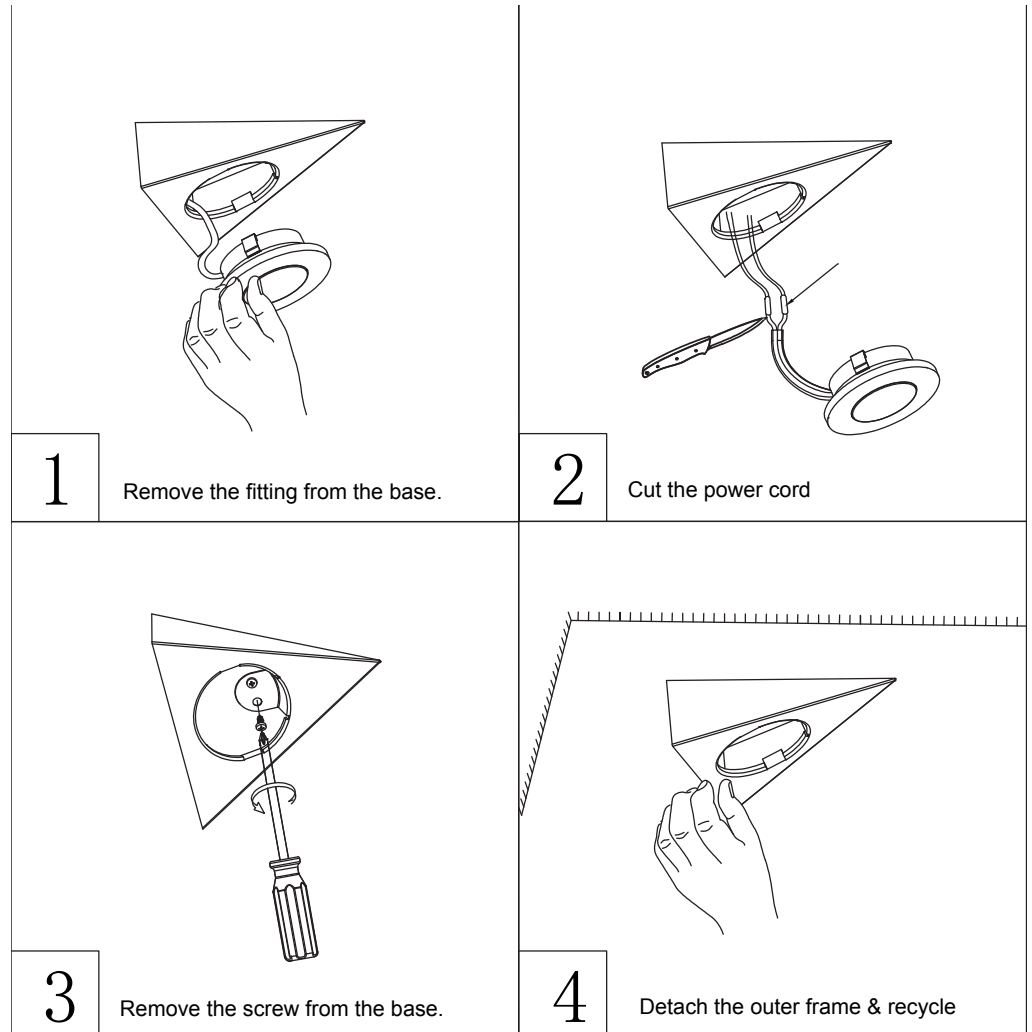
4. Connect the lamp to power supply.

ATTENTION:

Please read the user manual before using the product. Make sure the circuit is correctly installed before switching on. Please check if the circuit has a problem if the light does not work. Make sure the product is kept out of reach of children.

Product end of life instruction.

This Lighting product is in the scope of EU 2019/2020 directive on Waste Electrical and Electronic Equipment (WEEE). This product must be disposed according to the legislation. This document is intended for use by end of life recyclers or treatment facilities. It provides the basic information to assure an appropriate end of life treatment for the components and materials of the product. Please follow pictured diagram showing how to dismantle the product into different components which should be disposed of correctly. These components consist of plastic, metal and electronic materials. It is the responsibility of the end user to dispose of this product correctly. www.weeeireland.ie or contact your local council for further information.



For more information contact:

Unit 7/8 Ashbourne Business Centre, Ballybin Road, Ashbourne, Co. Meath, Ireland, A84 YP58,
Phone: 00353 1 835 7447



Solas Geal Distribution

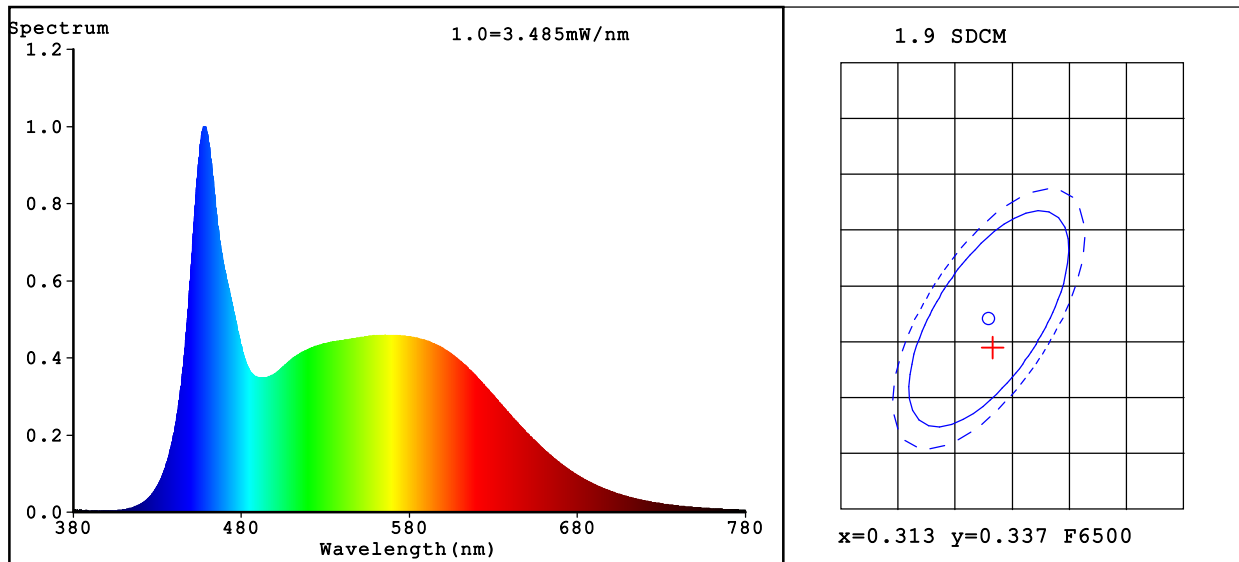
Unit 32 Junction One Business Park, Valley Road, Birkenhead, Merseyside, UK, CH41 7ED,

UK Ph: 0330 551 7000

Website: www.sgd.ie



Spectrum Test Report



Color Parameters:

Chromaticity Coordinate: $x=0.3133$ $y=0.3344$ $u'=0.1962$ $v'=0.4713$

Tc=6432K(Duv=0.0056) Dominant WL:Ld =492.4nm Purity=6.7%

Peak WL:Lp=457.7nm HWL:Lhd=28.6nm

Render Index:Ra=86.0

R1 =87 R2 =97 R3 =93 R4 =79 R5 =85 R6 =92 R7 =84

R8 =71 R9 =26 R10=92 R11=79 R12=63 R13=91 R14=96 R15=81

Photo Parameters:

Flux = 107.8 lm Eff. : 63.03 lm/W Fe = 356.2 mW

Electrical parameters:

V = 231.5 V I = 0.02403 A P = 1.710 W PF = 0.3073

WHITE:OUT

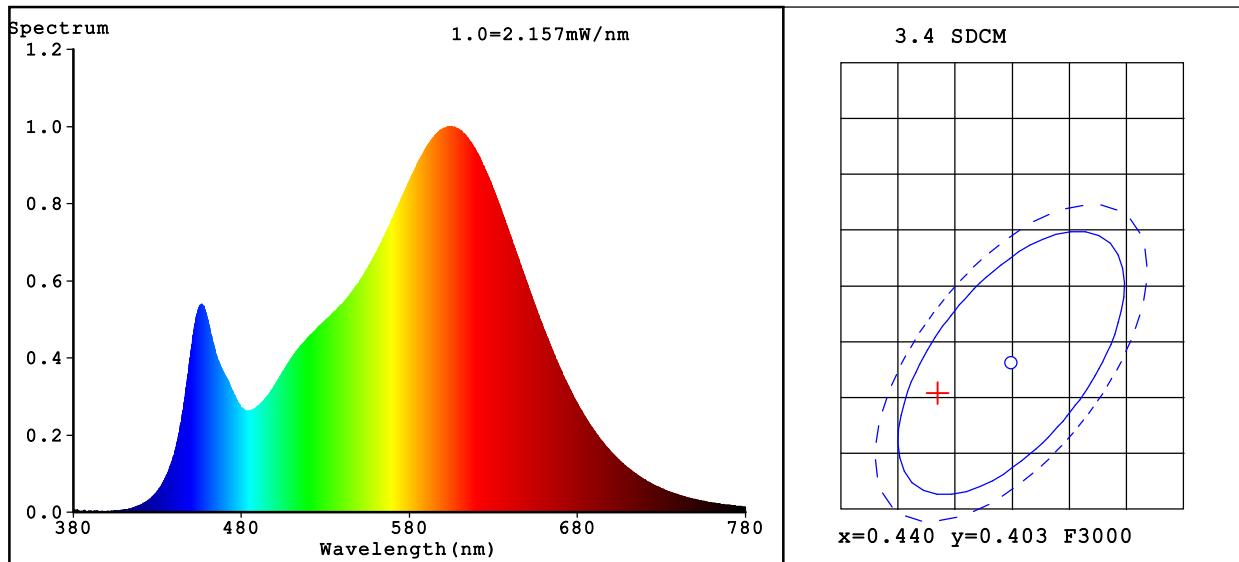
Status: Integral T = 2543 ms Ip = 53125 (81%)

Test Type: Fast Test; Delicacy = High; Tecool: ON

Model:STC MC CW
Tester:SGD LIMITED
Temperature:28Deg
Manufacturer:SGD LIMITED

Number:STC-MC-CW
Date:2021-12-22 11:56:26
Humidity:63%
Remarks:

Spectrum Test Report



Color Parameters:

Chromaticity Coordinate: $x=0.4335$ $y=0.4003$ $u'=0.2500$ $v'=0.5194$

Tc=3027K(Duv=-0.0010) Dominant WL:Ld =583.1nm Purity=50.3%

Peak WL:Lp=604.7nm HWL:Lhd=127.3nm

Render Index:Ra=84.0

R1 =84 R2 =94 R3 =94 R4 =81 R5 =84 R6 =93 R7 =82
R8 =61 R9 =14 R10=87 R11=80 R12=75 R13=87 R14=97 R15=76

Photo Parameters:

Flux = 105.1 lm Eff. : 62.59 lm/W Fe = 324.3 mW

Electrical parameters:

V = 231.5 V I = 0.02388 A P = 1.679 W PF = 0.3037

WHITE:OUT

Status: Integral T = 1749 ms Ip = 50398 (77%)

Test Type: Fast Test; Delicacy = High; Tecool: ON

Model: STC MC WW
Tester:SGD LIMITED
Temperature:28Deg
Manufacturer:SGD LIMITED

Number:STC-MC-WW
Date:2021-12-22 12:02:50
Humidity:63%
Remarks:



EU DECLARATION OF CONFORMITY

Manufacturers Name: Solas Geal Distribution

Unit 7/8 Ashbourne Business Centre, Ballybin Road, Ashbourne, Co. Meath, A84 YP58.

Declaration Number:

Declaration Number	Declaration Number	Declaration Number	Declaration Number
075-SCB WH WW	075-SCB WH CW	075-SCB MC WW	075-SCB MC CW
075-STC WH WW	075-STC WH CW	075-STC MC WW	075-STC MC CW

This declaration of conformity is issued under the sole responsibility of the manufacturer.

Products:

1.5Watt LED Cabinet light, Circular and Triangular

Model Number:

Codes	Codes	Codes	Codes
SCB WH WW	SCB WH CW	SCB MC WW	SCB MC CW
STC WH WW	STC WH CW	STC MC WW	STC MC CW

The product/model of the declaration described above is in conformity with the relevant Community harmonisation legislation:

Low Voltage Directive (2014/35/EU)
EMC (2014/30/EU)

The product/model of the declaration described above is in conformity with the standards and technical specifications listed below:

EN60598-1:2015, EN60598-2-1:1989, EN62031:2008+A1:2013+A2:2015, IEC /TR62778:2014, EN55015:2013+A1:2015, EN61547:2009, EN61000 -3-3:2013, EN61000-3-2:2014



STC



SCB

Signed:

Date:

Place of Issue: Republic of Ireland

