

# Product Information Sheet

COMMISSION DELEGATED REGULATION (EU) 2019/2015 with regard to energy labelling of light sources

**Supplier's name or trade mark:** Source

**Supplier's address:** SGD Limited, Unit 7/8 Ashbourne Business Centre, Ballybin Road, Ashbourne, Co. Meath. A84 YP58. Ireland.

**Model identifier:** SOVSEN BL/WH CCT

## Type of light source:

Lighting technology used:	LED	Non-directional or directional:	DLS
Light source cap-type (or other electric interface)	NO CAP TYPE		
Mains or non-mains:	MLS	Connected light source (CLS):	No
Colour-tuneable light source:	No	Envelope:	-
High luminance light source:	No		
Anti-glare shield:	No	Dimmable:	Yes

## Product parameters

Parameter	Value	Parameter	Value
-----------	-------	-----------	-------

### General product parameters:

Energy consumption in on-mode (kWh/1000 h), rounded up to the nearest integer	18	Energy efficiency class	F
Useful luminous flux ( $\phi_{use}$ ), indicating if it refers to the flux in a sphere (360°), in a wide cone (120°) or in a narrow cone (90°)	1 400 in Sphere (360°)	Correlated colour temperature, rounded to the nearest 100 K, or the range of correlated colour temperatures, rounded to the nearest 100 K, that can be set	3 000 or 4 000 or 6 000
On-mode power ( $P_{on}$ ), expressed in W	18,0	Standby power ( $P_{sb}$ ), expressed in W and rounded to the second decimal	-
Networked standby power ( $P_{net}$ ) for CLS, expressed in W and rounded to the second decimal	-	Colour rendering index, rounded to the nearest integer, or the range of CRI-values that can be set	83
Outer dimensions without separate control gear, light-	Height	230	Spectral power distribution in the range 250 nm to 800 nm, at full-load
	Width	105	
	Depth	55	
			See image in last page

ing control parts and non-lighting control parts, if any (millimetre)			
Claim of equivalent power <sup>(a)</sup>	-	If yes, equivalent power (W)	-
		Chromaticity coordinates (x and y)	0,434 0,403
<b>Parameters for directional light sources:</b>			
Peak luminous intensity (cd)	460	Beam angle in degrees, or the range of beam angles that can be set	125
<b>Parameters for LED and OLED light sources:</b>			
R9 colour rendering index value	16	Survival factor	1,00
the lumen maintenance factor	0,96		
<b>Parameters for LED and OLED mains light sources:</b>			
displacement factor (cos $\phi_1$ )	0,77	Colour consistency in McAdam ellipses	3
Claims that an LED light source replaces a fluorescent light source without integrated ballast of a particular wattage.	.. <sup>(b)</sup>	If yes then replacement claim (W)	-
Flicker metric (Pst LM)	0,0	Stroboscopic effect metric (SVM)	0,0

(a)'.': not applicable;

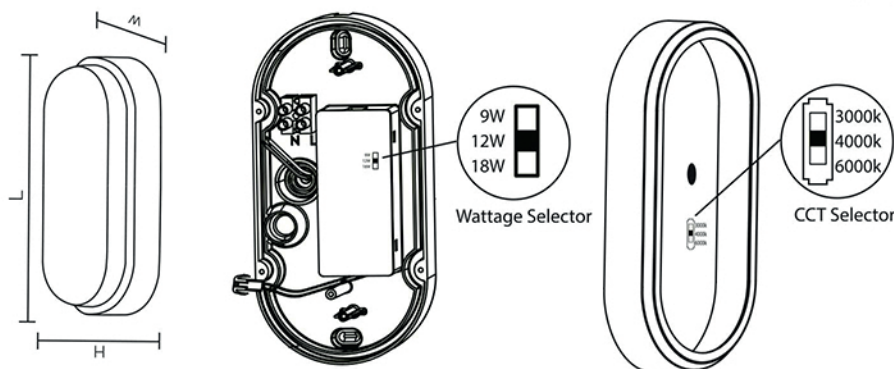
(b)'.': not applicable;

# Installation and Operating Manual



Product Codes: SOVLED-BL/WH-CCT, SOV SEN-BL/WH-CCT

Features	SOVLED BL/WH-CCT SOV SEN BL/WH-CCT
Shape	Oval
Adjustable Wattage	9w, 12w, 18w
Input Voltage	240 AV
Lumen Output	850Lm, 1050Lm, 1450Lm
Colour Temp	3000k, 4000k, 6000k
Lifespan	25,000H
Beam Angle	120°
Dimensions (L W H)	230 x 105 x 55mm



## General Safety Instructions

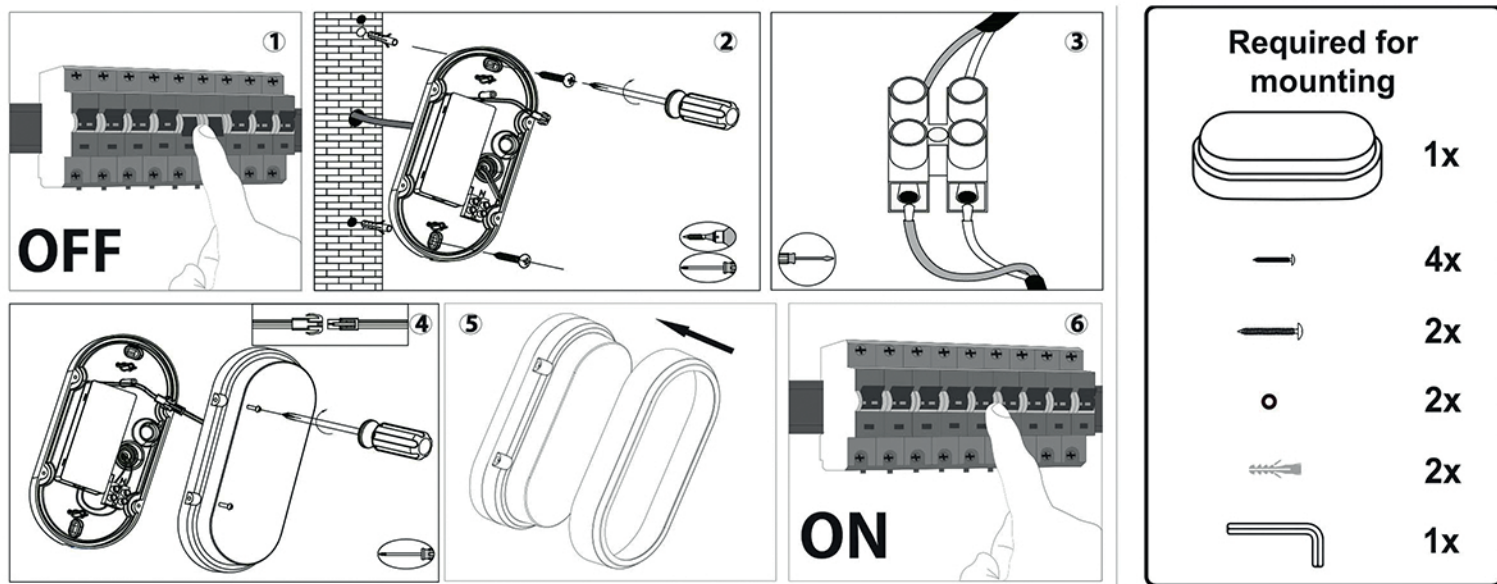
Please read the operating instructions for the LED luminaire before use. The operating instructions are part of the product. They contain installation, maintenance and recycling information about the product. They must be enclosed when passing the device to third parties.

## Safety Precautions and Warranty

- This product must be installed by a qualified electrician.
- Please read the manual before attempting to install the fitting.
- Do not open the fitting without reading the instructions.
- If mounting outdoors, use a suitable outdoor cable
- The LED luminaire cannot be repaired and must be disposed of if faulty.
- Ensure sufficient ventilation of the product.
- Do not cover it during operation.
- Do not install within reach of children or animals.
- This product is not suitable for dimming
- SGD is not liable for damage caused by non adherence to the instructions.

## Installation Instructions

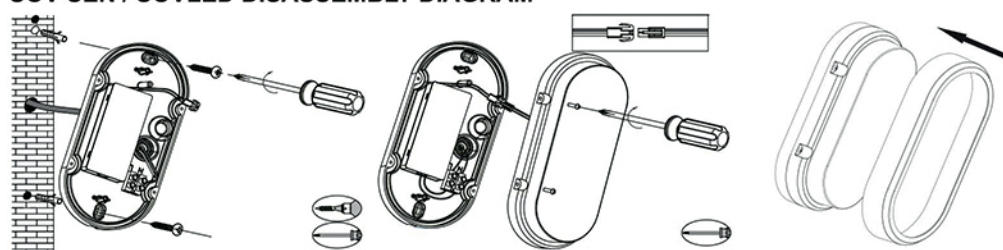
1. Ensure that the main power source is switched off
2. Drill two holes at the desired height of the fitting. Use the two designated points from the fixture as spacing between the holes.
3. Connect the luminaire to the mains supply with the terminal block inside the luminaire.
4. Turn the swivel to secure the cable
5. Fix the luminaire to the suitable position. Use the round rubber rings around the screws from the inside of the luminaire to make it waterproof
6. Activate the power source



## Product end of life instruction.

This Lighting product is in the scope of EU 2019/2020 directive on Waste Electrical and Electronic Equipment (WEEE). This product must be disposed according to the legislation. This document is intended for use by end of life recyclers or treatment facilities. It provides the basic information to assure an appropriate end of life treatment for the components and materials of the product. Please follow pictured diagram on the back of this manual showing how to dismantle the product into different components which should be disposed correctly. These components would consist of plastic, metal and electronic materials. It is the responsibility of the end user to dispose of this product correctly. [www.weeireland.ie](http://www.weeireland.ie) or contact your local council for further information.

## SOV SEN / SOVLED DISASSEMBLY DIAGRAM



## Care and Warranty

Before cleaning the unit, disconnect from other components. Do not use aggressive cleaning agents. The unit has been carefully checked for defects, nevertheless if you do have cause for complaint, please return it to the retailer together with proof of purchase. We offer a 3 year warranty from date of purchase. We are not liable for damage arising from incorrect handling, improper use or wear and tear. We reserve the right to make technical modifications.

CE declaration: LVD 2014/35/EU, EMC 2014/30/EU, RoHS 2011/65/EU



For more information contact:



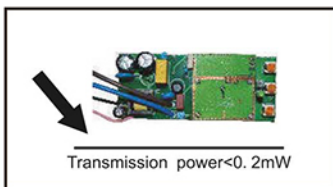
Solas Geal Distribution

Unit 7/8 Ashbourne Business Centre, Ballybin Road, Ashbourne, Co. Meath, Ireland, A84 YP58 Phone: 00353 1 835 7447  
Unit 32 Junction One Business Park, Valley Road, Birkenhead, Merseyside, UK, CH41 7ED Phone: 0330 551 7000

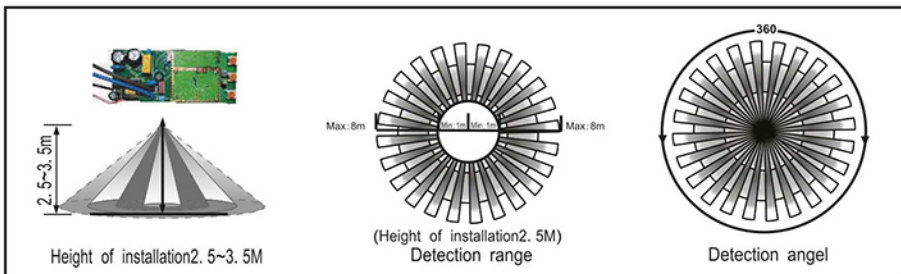
Website: [www.sgd.ie](http://www.sgd.ie)



**Note:** The high-frequency output of this sensor is <math><0.2\text{mW}</math> - that is just one 5000th of the transmission power of a mobile phone or the output of a microwave oven



## SENSOR INFORMATION



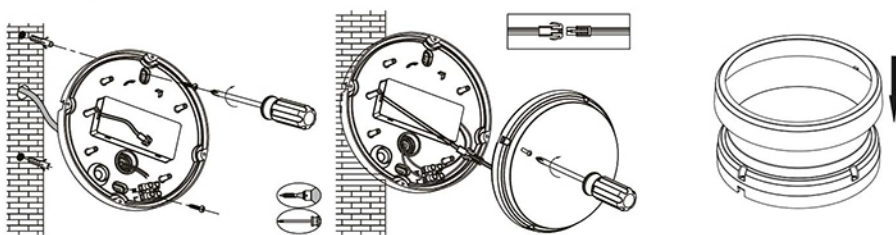
### Utilizing Field and Introduction

The microwave sensor is a moving object sensor that can detect a range of 360° and its working frequency is 5.8Ghz. The advantage of this product is a stable working state (stable working temperature:  $-15^{\circ}\text{C} \sim +70^{\circ}\text{C}$ ), It adopts a microwave sensor (high-frequency output  $<0.2\text{mW}$ ), so that it is safe and performs better than an infrared sensor.

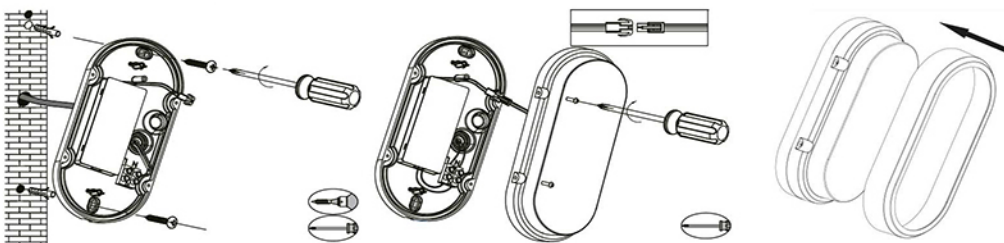
### Product end of life instruction.

This Lighting product is in the scope of EU 2019/2020 directive on Waste Electrical and Electronic Equipment (WEEE). This product must be disposed according to the legislation. This document is intended for use by end of life recyclers or treatment facilities. It provides the basic information to assure an appropriate end of life treatment for the components and materials of the product. Please follow pictured diagram showing how to dismantle the product into different components which should be disposed correctly. These components would consist of plastic, metal and electronic materials. It is the responsibility of the end user to dispose of this product correctly. [www.weeeireland.ie](http://www.weeeireland.ie) or contact your local council for further information.

### SCIR SEN/SCIRLED DISASSEMBLY DIAGRAM



### SOV SEN/SOVLED DISASSEMBLY DIAGRAM



Unit 7/8 Ashbourne Business Centre, Ballybin Road, Ashbourne, Co. Meath, Ireland, A84 YP58, Phone: 00353 1 835 7447  
 Unit 32 Junction One Business Park, Valley Road, Birkenhead, Merseyside, UK, CH41 7ED, Phone: 0330 551 7000  
 Website: [www.sgd.ie](http://www.sgd.ie)

# Installation Manual

## LED CCT Watt Adjustable Microwave Sensor

SCIRSEN-BL/WH-CCT, SOVSEN-BL/WH-CCT

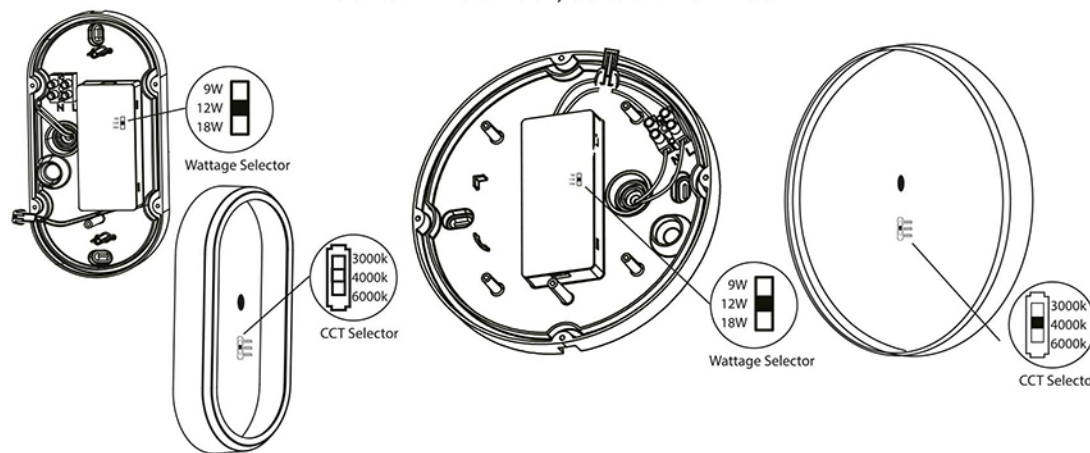
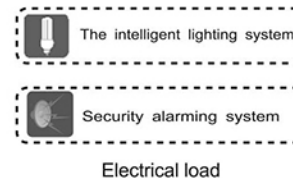
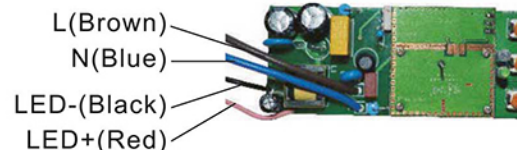
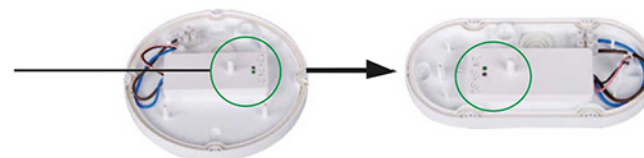


Diagram of microwave sensor which is installed within the glass and plastic shell of SOVSEN and SCIRSEN. Install product as per instructions.



### UTILIZED IN CEILING LIGHT SCIRSEN

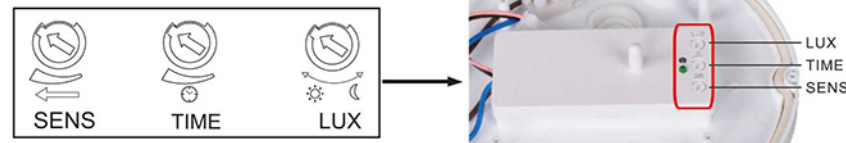
### SOVSEN



### WARNING

Do not install inside Ceiling floor or there will be no sensitivity to light.  
 Do not install if there is metal in front of installation area.  
 This fitting should be installed by a qualified electrician.

Light will switch on automatically when movement is detected, and switch off afterwards. You can set closing delay time as you choose. For example you can adjust TIME button to delay time 10sec~30mins if you think you will return within 30 minutes.  
 TIME button tip: Keep away from the detecting zone after adjusting the testing time, or the detecting time will be inaccurate when movement is again detected by the fitting.



For more information contact:



Solas Geal Distribution

If you wish your sensor to detect within a small zone, you can adjust the sensor button SENS to the range that you need (you may need to adjust different times until you find the most suitable). Use the LUX button to adjust the luminance value (you may need to adjust different luminance values until you find the most suitable).

### Detection Range setting (Sensitivity)



Detection Range is the term used to describe the radius of the circular detection zone produced on the ground after mounting the sensor light at a height of 2.5m, turn the detection control fully anticlockwise to select minimum detection range (approx 1m radius) and fully clockwise to select maximum detection range (approx. 8m).

**Note:** the above detection range is gained if the detected person is between 1.6m~1.7m, average figure and moves at a speed of 1.0~1.5m/sec. If the person differs in height, figure or moving speed, the detection distance will also differ.

In different scenarios, the sensitivity of the light will deviate.

**Attention:** When using this product, please adjust the sensitivity to the position you require. Do not set the sensitivity to maximum, as the product may be overly sensitive to moving objects such as small animals, blowing curtains or leaves or certain electrical equipment. Should this occur, please lower the sensitivity and test again.

### Time Setting



The light can be set to stay ON for any period of time between approximately 10sec (dial turned fully anti clockwise) and a maximum of 30mins (Dial turned fully clockwise). Any movement detected during the 'ON' time will reset the timer. The LED indicator will flash when adjusting the time setting dial. The number of flashes indicates the following:

1 flash=10sec, 2 flashes=1min, 3 flashes=2min, 4 flashes=5min, 5 flashes=8min, 6 flashes=10min, 7 flashes=15min, 8 flashes=20min, 9 flashes=25min, 10 flashes=30min.

**Note:** after the light switches off, it takes approximately 4 seconds before it is able to start detecting movement again. The light will only switch on in response to movement once this period has elapsed.

### Light-Control Setting



The chosen light response threshold is from 10-2000Lux. Turn it fully anti-clockwise to select dusk to dawn operation at about 10 lux. Turn it fully clockwise to select daylight operation at about 2000lux. The knob must be turned fully clockwise when adjusting the detection zone and performing the walk test in daylight.

### Important:

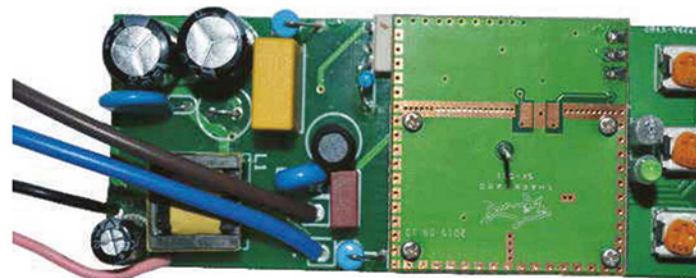
Please do not adjust the 3 functional buttons to excess. This is because they are connected to the components directly. There is a small stopper in each of the 3 components. When the buttons are over adjusted, the excessive turning will damage the stopper and lead to 360° looping turn around. The maximum adjusting limit range is 270°.

### Warning:

1. This fitting should be installed by a qualified electrician.
2. Do not install on or near a moving object
3. Do not install near busy traffic
4. Do not install near sparks produced by machinery

### Troubleshooting:

Problem	Cause	Solution
The load will not work	1. Incorrect light control setting selected 2. Load is faulty 3. Mains switched off	1. Adjust setting 2. Change load 3. Switch Mains on
The load overworks	Continuous movement in detection zone	Securely mount enclosure
The load works without movement	1. The sensor is not mounted correctly for detecting movement reliably 2. Movement occurred but was not identified by sensor (movement behind wall, movement by small object in immediate vicinity)	Check zone setting
The load will not work despite movement	1. Rapid movements are being suppressed to minimise malfunctioning 2. Set detection zone is too small	Check zone setting



### SPECIFICATION

**Power Source:** 220-240V/AC  
**Power Frequency:** 50/60Hz  
**Transmission Power:** <0.2mW  
**Detection Angle:** 360°  
**Detection range:** 1-8m (radius) (adjustable)

**Time Setting:** 10sec to 30min (adjustable)  
**Light control:** 10-2000Lux  
**Standby Power:** Approx. 0.9W  
**Working temperature:** -15°C ~+70°C



# LED Oval Bulkhead

## Product Mark

Product Type:SOVSEN CCT 3000K

Temperature :Li'C

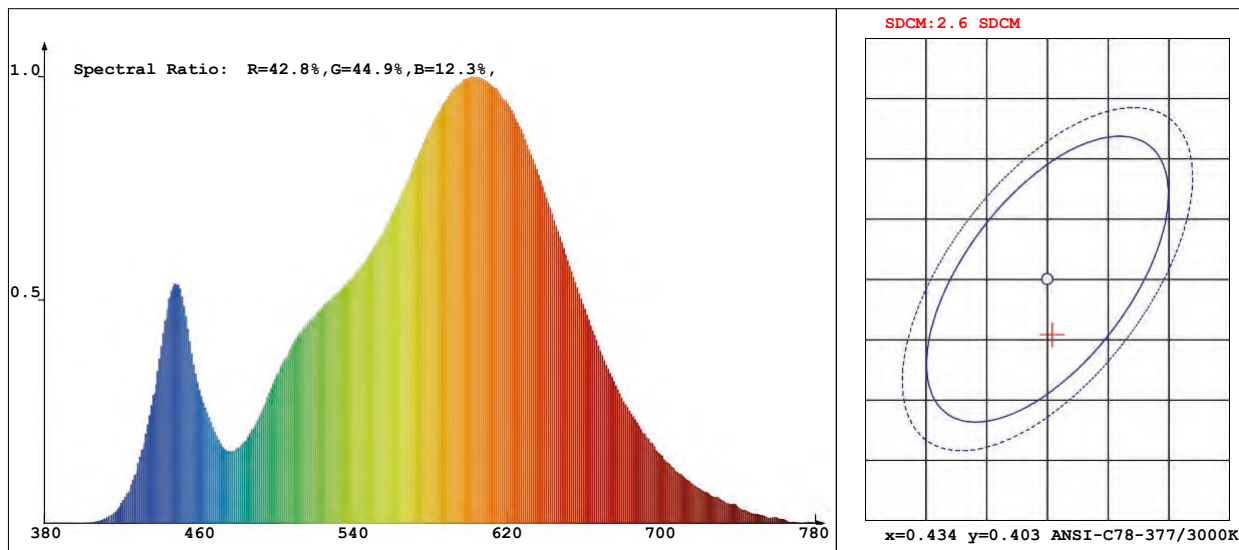
Operator :SGD Limited

Remark:

Manufacturer :SGD Limited

Humidity :65%

Test Date :2022-03-14 15:23:03



## Chroma Parameters

Chro.Coord.:x=0.4342 y=0.3984 u=0.2513 v=0.3458 duv=-0.0019

CCT: 2998K Dominant Wave.:583.5nm Purity:49.9%

Flux RGB Ratio:R=22.9%,G=75.6%,B=1.5% Peak Wave:602.5nm Half Width:130.1nm

## Rendering Index:Ra= 82.6

R1 =81 R2 =90 R3 =97 R4 =81 R5 =82 R6 =88 R7 =83 R8 =60

R9 =9 R10=78 R11=81 R12=75 R13=83 R14=98 R15=74

## Photo Parameters

Flux:1405.47lm

Effi.:76.1lm/W

Radiant:3831.7mW

Iv:0.0mcd

Efficiency:0.18

Effi Level:C (EU 874-2012)

## Ele. Parameters

Voltage:U=231.300V

Current:I=0.0830A

Power:P=17.67W

Power Factor:PF=0.919

## Instrument state

Instrument: HP8000S

Integral Time: 106.823ms

VPeak: 14327

VDark: 1287

Scan Range: 380-780nm

Product ID: 201812591

# LED Oval Bulkhead

## Product Mark

Product Type:SOVSEN CCT 4000K

Temperature :Li'C

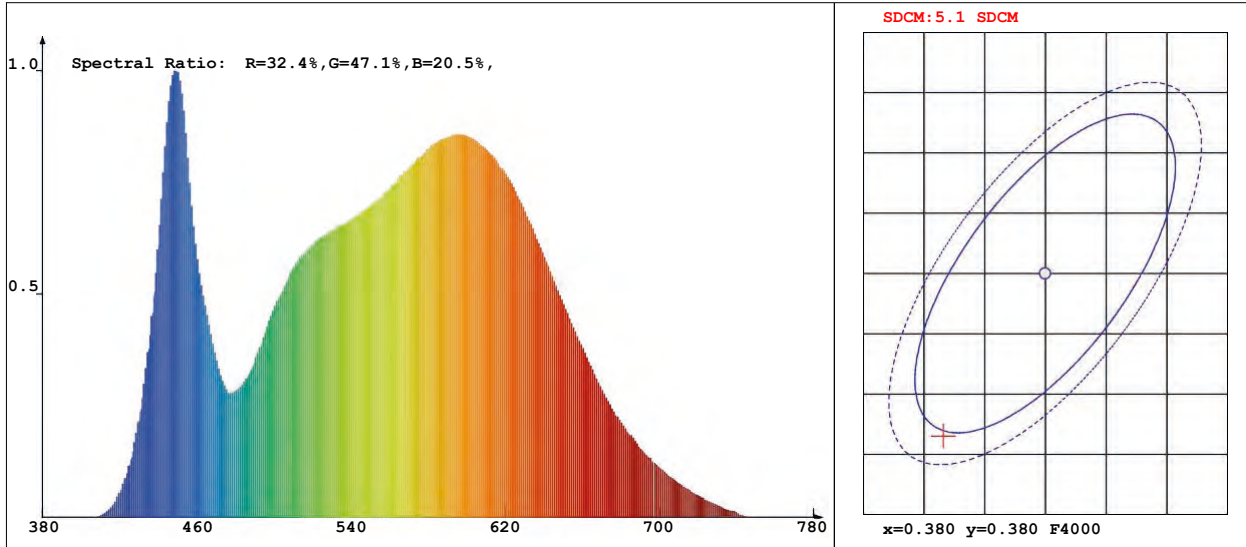
Operator :SGD Limited

Remark:

Manufacturer :SGD Limited

Humidity :65%

Test Date :2022-03-14 15:35:49



## Chroma Parameters

Chro.Coord.:x=0.3716 y=0.3665 u=0.2233 v=0.3304 duv=-0.0022

CCT: 4080K Dominant Wave.:579.8nm Purity:21.5%

Flux RGB Ratio:R=18.4%,G=79.1%,B=2.5% Peak Wave:448.6nm Half Width:25.0nm

## Rendering Index:Ra= 86.4

R1 =85	R2 =91	R3 =94	R4 =87	R5 =86	R6 =89	R7 =88	R8 =71
R9 =25	R10=78	R11=87	R12=70	R13=86	R14=97	R15=81	

## Photo Parameters

Flux:1462.29lm

Effi.:92.1lm/W

Radiant:4394.7mW

Iv:0.0mcd

Efficiency:0.15

Effi Level:B (EU 874-2012)

## Ele. Parameters

Voltage:U=231.300V

Current:I=0.0780A

Power:P=16.63W

Power Factor:PF=0.917

## Instrument state

Instrument: HP8000S

Integral Time: 106.422ms

VPeak: 15559

VDark: 1173

Scan Range: 380-780nm

Product ID: 201812591

# LED Oval Bulkhead

## Product Mark

Product Type:SOVSEN CCT 6000K

Manufacturer :SGD Limited

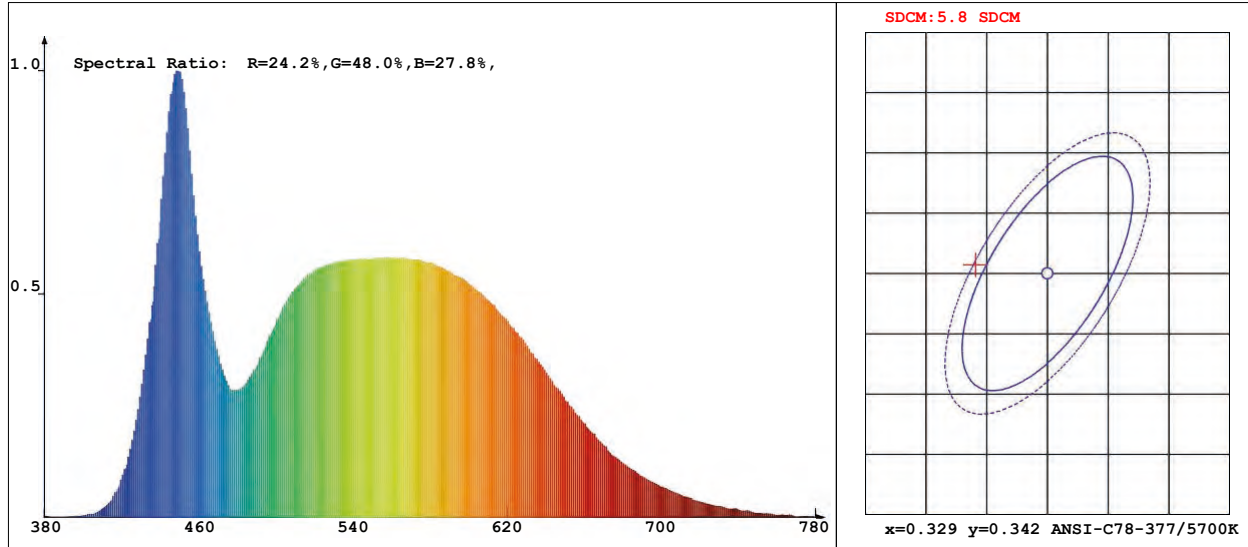
Temperature :Li'C

Humidity :65%

Operator :SGD Limited

Test Date :2022-03-14 15:49:35

Remark:



## Chroma Parameters

Chro.Coord.:x=0.3228 y=0.3424 u=0.1998 v=0.3179 duv=0.0051

CCT: 6024K Dominant Wave.:503.4nm Purity:3.2%

Flux RGB Ratio:R=14.1%,G=82.5%,B=3.4% Peak Wave:448.6nm Half Width:26.8nm

## Rendering Index:Ra= 84.1

R1 =82	R2 =87	R3 =91	R4 =85	R5 =83	R6 =83	R7 =89	R8 =72
R9 =15	R10=70	R11=85	R12=66	R13=83	R14=95	R15=78	

## Photo Parameters

Flux:1428.39lm Effi.:76.0lm/W Radiant:4026.3mW Iv:0.0mcd

Efficiency:0.18

Effi Level:C (EU 874-2012)

## Ele. Parameters

Voltage:U=231.300V

Current:I=0.0810A

Power:P=17.34W

Power Factor:PF=0.919

## Instrument state

Instrument: HP8000S

Integral Time: 76.030ms

VPeak: 13271

VDark: 1299

Scan Range: 380-780nm

Product ID: 201812591





## EU DECLARATION OF CONFORMITY

**Manufacturers Name:** Solas Geal Distribution  
Unit 7/8 Ashbourne Business Centre, Ballybin Road, Ashbourne, Co. Meath, A84 YP58.

**Declaration Number:**  
003-SCIRLED BL/WH-CCT . 003-SCIRSEN BL/WH-CCT  
003-SOVLED BL/WH-CCT . 003-SOVSEN BL/WH-CCT

This declaration of conformity is issued under the sole responsibility of the manufacturer.

**Products:**  
Oval & Circular LED IP54 Wall and Ceiling lights Multi Watt CCT

**Model Number:**  
SCIRLED BL/WH-CCT, SCIRSEN BL/WH-CCT,  
SOVLED BL/WH-CCT, SOVSEN BL/WH-CCT

The product/model of the declaration described above is in conformity with the relevant Community harmonisation legislation.

**Low Voltage Directive (2014/35/EU)**  
**Directive 2009/125/EC**  
(EU) 2019/2015 Regulation on Energy Labelling for Light Sources.  
(EU) 2019/2020 Ecodesign Requirements for Light Sources and Separate Control Gears

The product/model of the declaration described above is in conformity with the standards and technical specifications listed below:

EN55015:2013, EN61547:2009, EN61000-3-2:2014, EN61000-3-3:2013+A1<sup>1</sup>:2019+A2:2021,  
EN60598-1:2015+AC2016,  
EN60598-2-1:1989, EN62471:2008, IEC/TR 62778:2014, EN62493:2010



*Signed:*

*Date:* 29/11/23

*Place of Issue:* Republic of Ireland

