

## BATTERY REPLACEMENT

Always TURN OFF the A.C. supply to the Smoke Alarm before replacing the battery. Replace the battery at least once annually, or immediately when the low battery signal sounds once a minute, even though the Smoke Alarm is receiving A.C. power. Test the alarm for correct operation using the test facility whenever the battery is replaced.

**WARNING: DANGER OF EXPLOSION IF BATTERY IS INCORRECTLY REPLACED. THE USE OF BATTERIES OTHER THAN THOSE RECOMMENDED ON THE BACK OF THE SMOKE ALARM MAY BE DETRIMENTAL TO ITS OPERATION**

The battery should only be replaced by a qualified electrician or similarly qualified person.

- Turn off the A C power supply to the Smoke Alarm.
- Gently unlock the detector unit from the base by push back the snap lock with a screw driver and turn the alarm unit clockwise to release it. See Figure 5 and Figure 6
- Remove the battery from the compartment.
- Insert a new, healthy 9V battery. NOTE POLARITY OF CONNECTIONS. Ensure the metal tab is fully depressed when the battery has been fitted
- Using the Push-to-Test button, test the smoke alarm to verify 9V DC battery back-up. See "TESTING YOUR SMOKE ALARM"
- Reattached the Smoke alarm to the mounting plate by rotating the alarm unit counter-clockwise until it snaps into place. (see Figure 4)
- Turn on the AC power and test the Smoke Alarm using the Push-to-Test button. See "TESTING YOUR SMOKE ALARM"

## IMPORTANT SAFEGUARDS

- Installation of your smoke alarm is only one step in your safety plan. Other important steps should be taken to further improve your safety:-
- Install the smoke alarm properly, following this instruction leaflet
- Test your smoke alarm weekly
- Replace the battery immediately once depleted
- Do not smoke in bed
- Keep matches & lighters away from children
- Store flammable materials in a proper manner away from naked flames or sparks
- Maintain emergency equipment such as Fire Extinguishers, escape ladders etc and ensure all occupants know how to use them correctly.
- Plan an escape route/s from your building in advance and ensure all occupants are aware of them. Re-enforce this awareness periodically through-out the year.
- Make sure escape routes remain free of any obstructions.

**WARNING: IF THERE IS ANY QUESTION AS TO THE CAUSE OF AN ALARM IT SHOULD BE ASSUMED THAT THE ALARM IS DUE TO AN ACTUAL FIRE AND THE DWELLING SHOULD BE EVACUATED IMMEDIATELY. THIS PRODUCT IS A SEALED UNIT AND CANNOT BE REPAIRED – IF THE UNIT IS TAMPERED WITH IT WILL INVALIDATE THE WARRANTY. IF THE UNIT IS FAULTY PLEASE RETURN IT TO YOUR ORIGINAL SUPPLIER WITH YOUR PROOF OF PURCHASE.**

## YOUR SMOKE ALARM WARRANTY

These smoke alarms are warranty to be free from defects in materials and workmanships under normal use and service for a period of five years from date of purchase. The company will not be obligated to repair or replace parts which are found to be in need of repair because of misuse, damage or alterations occur after the date of purchase. Send the Smoke Alarm with proof of purchase, postage and return postage prepaid, to local distributor. The liability of the company arising from the sale of this smoke alarm shall not in any case exceed the cost of replacement of smoke alarm and in no case shall the company be liable for consequential loss or damages resulting from the failure of the smoke alarm.

**SOLAS GEAL DISTRIBUTION LTD. SHALL HAVE NO LIABILITY FOR ANY PERSONAL INJURY OR PROPERTY DAMAGE, OR ANY SPECIAL INCIDENTAL, CONTINGENT OR CONSEQUENTIAL DAMAGE OF ANY KIND RESULTING FROM A FIRE. THE EXCLUSIVE REMEDY FOR BREACH OF THE LIMITED WARRANTY CONTAINED HEREIN IS THE REPAIR OR REPLACEMENT OF THE DETECTIVE PRODUCT AT SOLAS GEAL DISTRIBUTION LTD. OPTION. IN NO CASE SHALL SOLAS GEAL DISTRIBUTION LTD.'S LIABILITY UNDER ANY OTHER REMEDY PRESCRIBED BY LAW EXCEED THE PURCHASE PRICE. YOUR SMOKE ALARMS IS NOT A SUBSTITUTE FOR PROPERTY, DISABILITY, LIFE OR OTHER INSURANCE OF ANY KIND. APPROPRIATE COVERAGE IS YOUR RESPONSIBILITY. CONSULT YOUR INSURANCE AGENT. THIS DOES NOT AFFECT YOUR STATUTORY RIGHTS.**

This alarm is only suitable for single occupancy private dwellings only and not intended for multi occupancy private dwellings or commercial or industrial dwellings.

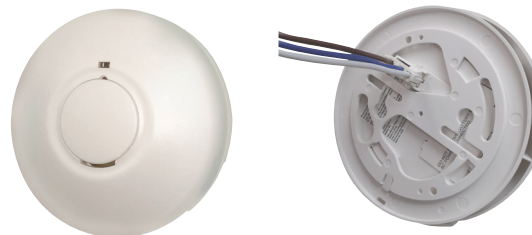


KM 638574  
BS EN14604:2005

# Installation Instructions

## 240v AC Operated Interconnectable Photoelectrical Smoke Alarm (with 9v battery Backup)

PRODUCT CODE: SGD1236



This instruction leaflet contains important information on the correct installation and operation of your smoke alarm. Read this leaflet fully before attempting installation and retain for future reference.

## MAIN FEATURES

- Photoelectric Sensor For Slow Smoldering Fires
- Power / Alarm Test Button
- HUSH FEATURE
- Battery Back-Up
- Low Battery Warning
- INTERCONNECTABLE (UP TO 20 HEAT AND/OR SMOKE ALARMS)
- Kitemark Approved – BS EN14604: 2005
- Supplied with Fixing Kit
- Loud 85dB Alarm Signal
- Fault signal



FIGURE 1 - SINGLE STOREY DWELLING

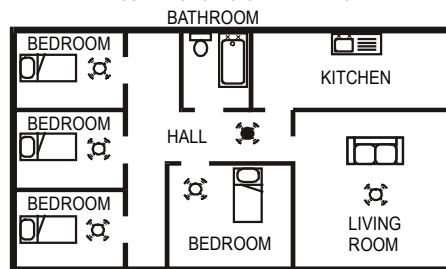
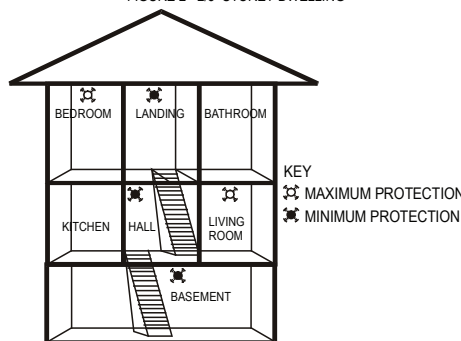


FIGURE 2 - 2/3 STOREY DWELLING



## SPECIFICATION

Power Source: 220-240Vac~ 50-60Hz with 9V battery back-up (battery included)  
 Battery Backup: 9V DC Carbon Zinc Battery (Peak Power 1604E Golden Power 1604D, Gold Peak 1604P), Alkaline Battery (Gold Peak 1604A, Energizer 522, Duracell MN1604) or Lithium Battery (EVE CR9V/P)  
 Battery Backup Life: In the event of a break in the mains supply the battery will give detector operation for 1 month minimum  
 Operation Current: <40mA operation (In Alarm)  
 Sensitivity to smoke: 0.08-0.18db/m  
 Operation Temp: 0°C - 40°C  
 Ambient Humidity: 10%-90%  
 Alarm Sound Level: 85 Decibels at 3 metres  
 Interconnect facility: 20 smoke detector over 150 metres maximum  
 Approved to: BS EN14604:2005

## PRODUCT DESCRIPTION

SGD1236 is a multiple station photoelectric smoke alarm and can be connected to other alarms of the same make and type. This interconnect feature allow up to 20 units to be connected together over 150 metres maximum, using the single white wire, and thus allowing all alarms to sound when any one is activated.

**Note: This smoke alarm cannot be connected to any other device such as a fire alarm panel.**

All the Smoke Alarms should be interconnected to ensure the early warning will be heard, particularly by somebody sleeping. A properly designed early warning fire system ensures the alarm is given before the escape routes become blocked with smoke.

## LOCATING THE SMOKE ALARM

If your dwelling is multi-storey, for minimum protection one alarm should be fitted at the bottom of the staircase with

For more information contact:

Unit 7/8 Ashbourne Business Centre, Ballybin Road, Ashbourne, Co. Meath, Ireland, A84 YP58,  
**Phone:** 00353 1 835 7447



Solas Geal Distribution

Unit 32 Junction One Business Park, Valley Road, Birkenhead, Merseyside, UK, CH41 7ED,

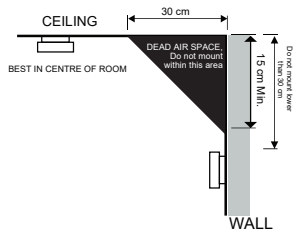
**UK Ph:** 0330 551 7000

**Website:** www.sgd.ie

further alarms fitted on each upstairs landing. This includes basements but excludes crawl spaces and unfinished attics. See Figure 2 for examples.

NOTE: For maximum protection an alarm should be fitted in every room (except kitchen, bathroom and garage). DO NOT FIT AN ALARM IN THE KITCHEN OR BATHROOM, as cooking fumes or steam may trigger the alarm. DO NOT FIT ALARM IN GARAGE, as exhaust fumes are likely to set it off.

**Figure 3i**  
Positioning the smoke / heat detector



**Wall Mounting**

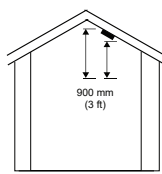
Do not mount tight into the corners. Put the top edge of your smoke alarm between 150 and 300mm below the ceiling. Keep at least 300mm from room corners. See Figure 3i

**On a Sloping Ceiling**

In areas with sloping or peaked ceilings install your Smoke Alarm 900mm from the highest point measured horizontally because "dead air" at the apex may prevent smoke from reaching the unit. See Figure 3ii.

Figure 3i - Positioning the smoke / heat detector Figure 3ii

**Figure 3ii**



**POSITIONING THE SMOKE ALARM**

**Ceiling Mounting**

As hot smoke rises and spreads out, it is advisable to mount the alarm on a ceiling in a central position. Avoid areas where there is no air circulation. e.g. corners of rooms and keep away from items which may prevent the free flow of air. Place the unit at least 300 mm from and light fitting or decorative object which might obstruct smoke entering the alarm. Keep at least 300 mm away from walls. See Figure 3i.

**Areas to be avoided include the following :-**

- Situations where the temperature may fall below 0° or rise above 40°
- Humid areas such as bathrooms, kitchens, shower rooms where the relative humidity may exceed 90%
- Near a decorative object, door, light fitting, window molding etc., that may prevent smoke from entering the alarm.
- Fume filled environments such as garages. Exhaust gases may cause false alarms.
- Adjacent to or directly above hot components such as radiators or wall vents that can affect the direction of air currents.
- In very dusty or dirty environments such as workshops.
- Locate unit at least 1.5m and route wiring at least 1m away for fluorescent light fittings as electrical "noise" and/or flickering may affect the unit. Do not wire into the same circuit as fluorescent lights or dimmers.
- Do not locate in insect infested areas. Insects and contamination on the alarm sensor can increase its response time.

**INSTALLING THE SMOKE ALARM**

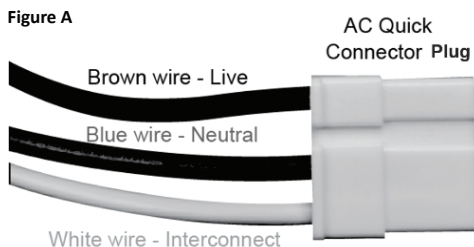
**WARNING – This smoke alarm is mains powered and requires wiring by a qualified electrician in accordance with the current IEE Regulations for Electrical Installations (BS7671).**

**The circuit used to power the smoke alarm must be a dedicated permanent supply that cannot be switched off accidentally by the normal user. Before installing ensure the electrical supply is isolated.**

**WARNING : To prevent injury, this smoke alarm must be securely attached to the ceiling/wall in accordance with the installation instructions.**

**IMPORTANT** A correct AC Quick Connector Plug should have a Brown, Blue, White wire on it as the configuration on Figure A above. If the AC Quick Connector Plug does not have the correct colour order, please STOP USING IT and contact your retailer store immediately to replace with a new AC Quick Connector.

**The Smoke Alarm will function correctly either as a stand-alone alarm or inter-connected. All inter-connected Smoke Alarms must be supplied from a single power circuit. A common neutral must be used for the interconnect to function. Do not connect the Inter-connect wire to Live or Neutral.**



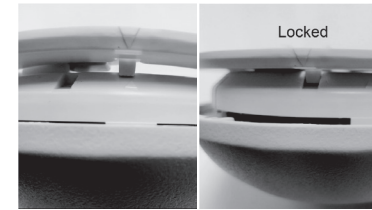
- Disconnect the AC main power from the circuit that is going to be used.
- Having established the mounting location install a junction box suitable for locating the termination point. Ensure that there is no other electrical wiring or pipe work in the area adjacent to the mounting surface.
- Unlock the detector unit from the base by push back the snap lock with a screw driver and turn the alarm unit anti-clockwise to release it. See Figure 5 and Figure 6
- Fix mounting plate in position.
- Strip the Live / Neutral and Inter-connect (if used) wires.
- Connect the wires correctly. If the smoke alarms are to be

interconnected, connect the white wire. For Alarm that are used as single station, DO NOT CONNECT THE WHITE WIRE TO ANYTHING. Ensure the screws are fully tightened. See Figure 6.

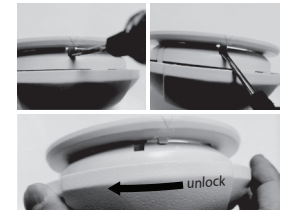
- The alarm must be wired in accordance with National wiring codes. **LIVE** - connect to house wires coloured Brown, Red or marked with L. **NEUTRAL** - connect to house wires coloured Blue, Black or marked with N. **INTERCONNECT** - connect to the third wire. If you are not interconnecting to other units, do not connect this wire.
- Insert a 9V battery firmly into battery compartment on the rear of the alarm. NOTE **POLARITY OF CONNECTIONS.**
- Ensure the metal tab is fully depressed when the battery has been fitted. NOTE – For the safety of the end user, the smoke alarm cannot be fitted without its battery.
- Before assembly to base plate test the correct operation of the smoke alarm (operating from the battery only) by depressing the test button on the front of the alarm. The unit should emit a loud pulsating alarm.
- Assemble alarm unit onto the mounting plate by turning the alarm unit counter-clockwise. See Figure 4
- Restore the AC supply by plugging the AC QUICK CONNECTOR into the back of the alarm (see Figure 4). Make sure that the locks on the connector snap into place.



**Figure 4**  
Plug the AC Quick Connector into the back of the alarm



**Figure 5**  
Turn the alarm units clockwise until the snap lock engages



**Figure 6**  
Push back the snap lock and turn the alarm anti-clockwise

- Test the correct operation of the smoke alarm by depressing the test button on the front of the detector. The unit should emit a loud pulsating alarm.
- Should use 2.1mm wire for connection.

**OPERATING YOUR SMOKE ALARM**

Once the smoke alarm has been installed a small GREEN indicator light (LED) should be visible through the alarm grill indicating that AC supply is healthy. A RED indicator light (LED) should also flash approximately once a minute to indicate the battery is healthy and the unit is operating properly. If smoke is detected, the unit will emit a loud pulsating alarm and a RED indicator light (LED) will be flashing quickly at the same time until the air is clear.

**TESTING YOUR SMOKE ALARM**

It is recommended that you test your smoke alarm once a week to ensure the detector is working correctly. Push and hold the test button for approximately 3 seconds. A loud pulsating alarm should sound and a RED indicator light (LED) will flash at the same time. NOTE – for multiple interconnected smoke alarms, only the RED indicator light (LED) of the originating unit will flash rapidly. All other units in the interconnect system will sound an alarm but their RED indicator light (LED) will NOT flash. Test each alarm checking that the alarm is triggered on all other alarms installed.

**HUSH OR SILENCE FEATURE**

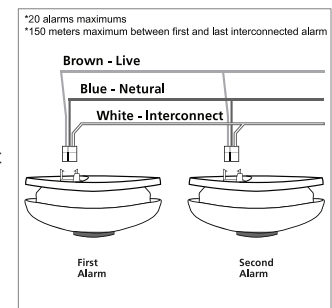
This Smoke Alarm has a built-in Hush or Silence feature incorporated into the Test button. If cooking or other non-hazardous sources cause the unwanted alarm, it can be temporarily silenced by depressing the test button and holding for approximately 3 seconds. The alarm will enter a dormant period for 10 minutes. The red LED will flash every 10 seconds to indicate the sensitivity is reduced. At the end of the hush period the alarm will reset to normal sensitivity. NOTE – If the smoke density increase during this period (i.e. from a fire) the unit will go into alarm mode.

**LOW BATTERY WARNING**

If the smoke alarm emits a short 'beep' once a minute the battery is at the end of its life and should be replaced immediately. This low voltage warning will be given for at least 30 days. In this case, the other interconnected units in the system which are not in low battery condition will chirp for a few seconds once an hour as long as the detector with the "dead" battery beeps. If the red indicator light (LED) does not flash every minute then replace the battery.

**MAINTAINING YOUR SMOKE ALARM**

Clean your smoke alarm at least once every six months to prevent dust build up. This can be done using a vacuum cleaner with the brush attachment. Clean gently around the front grilled section and sides. The apparatus shall not be exposed to dripping or splashing and no objects filled with liquids, such as vases, shall be placed on the apparatus.



**Figure 7**  
Wiring and interconnect facility



## EU DECLARATION OF CONFORMITY

**Manufacturers Name:** Solas Geal Distribution  
Unit 7/8 Ashbourne Business Centre, Ballybin Road, Ashbourne, Co. Meath, A84 YP58.

**Declaration Number:**  
053-SGD1236

This declaration of conformity is issued under the sole responsibility of the manufacturer.

**Products:**  
Smoke Alarm (photoelectric) Mains with Battery Back up

**Model Number:**  
SGD1236

The product/model of the declaration described above is in conformity with the relevant  
Community harmonisation legislation:

BS EN14604:2005, CE 0086-CPR-638573

EMC: 2014/30/EU

KM638574

Low Voltage Directive (2014/35/EU)

Job Number/Test Report 8959984 **bsi.**



*Signed:*

*Date:*

*Place of Issue: Republic of Ireland*

