

Emergency Installation and Inspection

Installation / Test Record	Serial/ Luminaire Number:		
	Installed By:		Date:
	Commissioned By:		Date:

Monthly test	Year 1		Year 2		Year 3*		Year 4	
	Signed	Date	Signed	Date	Signed	Date	Signed	Date
1								
2								
3								
4								
5								
6								
7								
8								
9								
10								
11								
12								

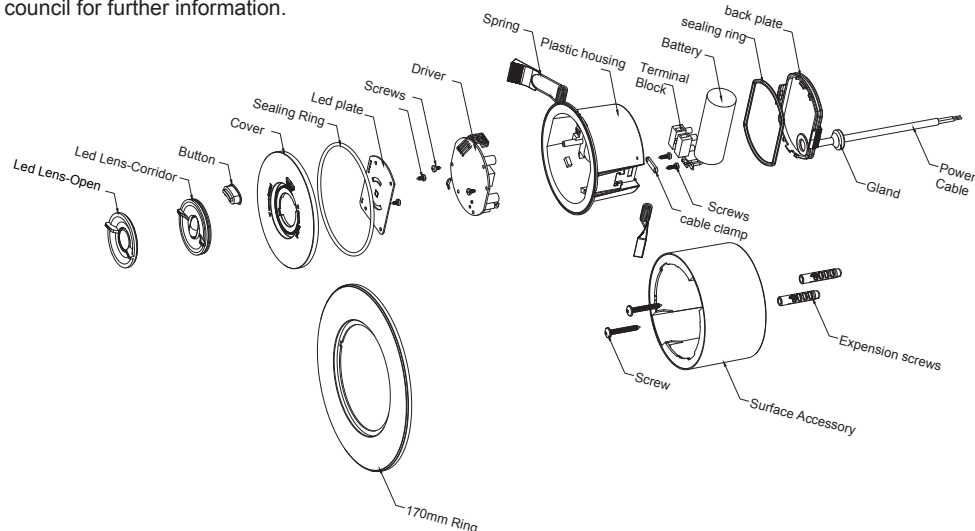
DISASSEMBLY INSTRUCTIONS

Product end of life instruction.

This Lighting product is in the scope of EU 2019/2020 directive on Waste Electrical and Electronic Equipment (WEEE). This product must be disposed of, according to the legislation. This document is intended for use by end of life recyclers or treatment facilities. It provides the basic information to assure an appropriate end of life treatment for the components and materials of the product.

Please follow pictured diagram showing how to dismantle the product into different components which should be disposed correctly. These components would consist of plastic, metal and electronic materials.

It is the responsibility of the end user to dispose of this product correctly. www.weeireland.ie or contact your local council for further information.



For more information contact:

Unit 7/8 Ashbourne Business Centre, Ballybin Road, Ashbourne, Co. Meath, Ireland

Phone: 00353 1 835 7447

Website: www.sgd.ie



Solas Geal Distribution



Installation

LED EMERGENCY SELF TEST SURFACE / RECESSED DOWNLIGHT

PRODUCT CODE: SEM-SWDL



Self Test Method: Please ensure this product is tested monthly and half yearly

MODE	METHOD FOR MODE	IF	LED INDICATOR STATUS	BEEP SOUND	RESULT
Mains ON	No Action Needed	Battery Ok	Green (Permanently On)	OFF	Green LED
	No Action Needed	Battery Fault	Red (Flashes every 1 second)	Beep every 45 Seconds*	Red LED, Loud Beep sound*
	No Action Needed	LED Fault*	Amber (Flashes every 1 second)*	Beep every 45 Seconds*	Amber LED, Loud Beep Sound

Monthly self test battery discharge (discharges the battery for 10 seconds)	Self Testing	Battery Ok	All Indicators Off	OFF	Green LED
		Battery Fault	Red (Flashes every 1 second)	Beep every 45 seconds	Red LED, Loud Beep sound
		LED Fault	Amber (Flashes every 1 Second)	Beep every 45 seconds	Amber LED, Loud Beep Sound

Half yearly self test battery discharge (discharges the battery for 3 hours)	Self Testing	Battery Ok	All Indicators Off	OFF	Green LED
		Battery Fault	Red (Flashes every 1 second)	Beep every 45 seconds	Red LED, Loud Beep sound
		LED Fault	Amber (Flashes every 1 Second)	Beep every 45 seconds	Amber LED, Loud Beep Sound

Mains Failure	No action needed Luminaire enters 3 hour emergency mode	Battery Ok	All Indicators Off	OFF	
---------------	---------------------------------------------------------	------------	--------------------	-----	--

During Non-Maintained Mode if the battery is faulty the LED indicator will light red and beep.

Note:

- No AC power will cause luminaire to enter Emergency Mode.
- After a repair, please connect AC power and perform a test (for performance confirmation). To do this, operate your emergency key switch.
- If the battery and LED board failure simultaneously, the red LED will flash.
- Any beep sound will stop after correct maintenance or repair.
- Manual testing will not affect the monthly and half-yearly testing schedule

Self Test

LED Light Status

Green LED Constant

Red LED (flashes every 1 second)

Amber LED (flashes every 1 second)

Mains Failure

Beep Sound

OFF

Beep every 45 seconds

Beep every 45 seconds

No indicator

Status

Battery Charging, No faults, Mains On

Battery Fault

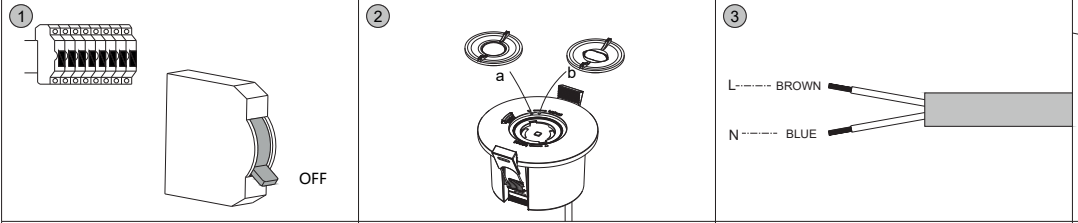
LED Fault

Check Power Supply

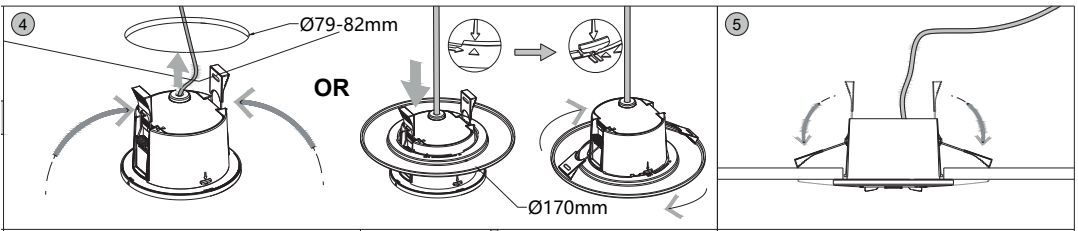


Important Installation Information

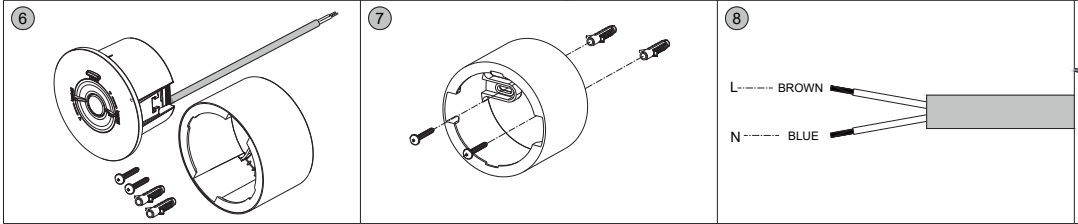
1. Installation should be carried out in accordance with the current edition of the National Wiring Regulations. and by a qualified electrician
2. Maximum Input Voltage - 220V-240V AC 50/60Hz
3. Connect the battery pack to the PCB by connecting the female socket on the battery wires to the male plug mounted on the PCB, ensuring the correct orientation
4. Ensure that all electrical connections are tight with no loose strands
5. Before commencing installation or maintenance, ensure electricity is switched off at the mains.
6. Class II, double insulated and earth is not required
7. This luminaire is not dimmable
8. All green charge indicator LED are illuminated when the battery is charging. During situations where there is no power from mains electricity and the battery is discharging, all green charge indicator LEDs will be off.



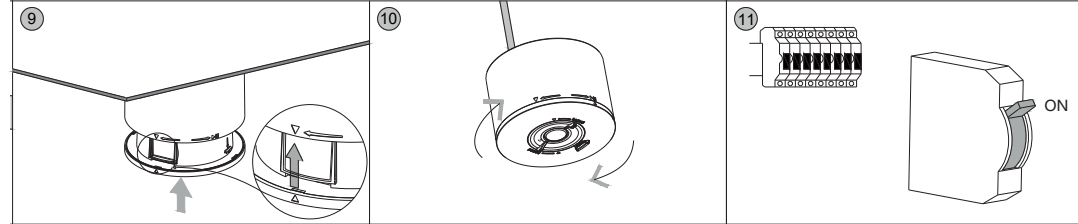
1. Turn off the power
 2. Select Open lens 'a' or Corridor Lens 'b' and Fitting for assembly
 3. Lamp external wiring and power cord connection: blue connection N, brown connection L



4. **Recessed installation:** pinch the torsion spring to vertical position and insert into the ceiling cutout hole (you can choose to put the 170mm diameter cover and lamp assembly into the mounting holes).
 5. Loosen the torsion spring, the lamps and lanterns and the ceiling fix is complete



6. **Surface Installation:** Assemble the supplied accessories for surface mounting
 7. Use the fitting screws and expansion tube to fix the downlight tube.
 8. Connect the external wires of lamps and power cables: blue connecting N, brown connecting L.



9. Push the lamp upward after aligning it with the arrow of the downlight cylinder.
 10. Installation is completed by rotating clockwise in place according to the mark.
 11. Turn on the power

FEATURES

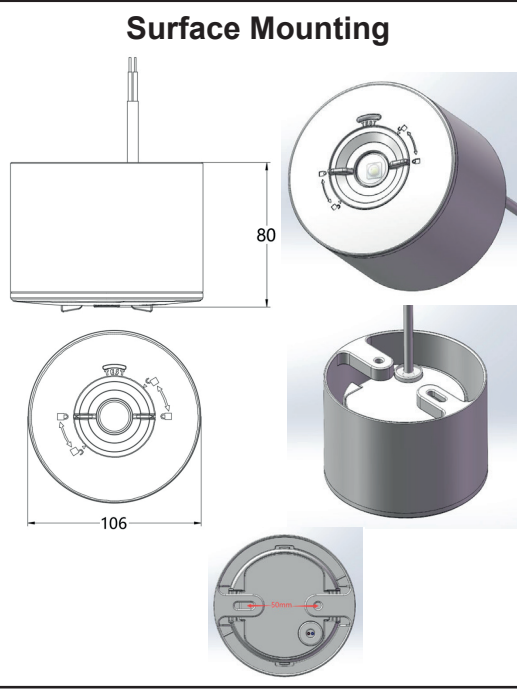
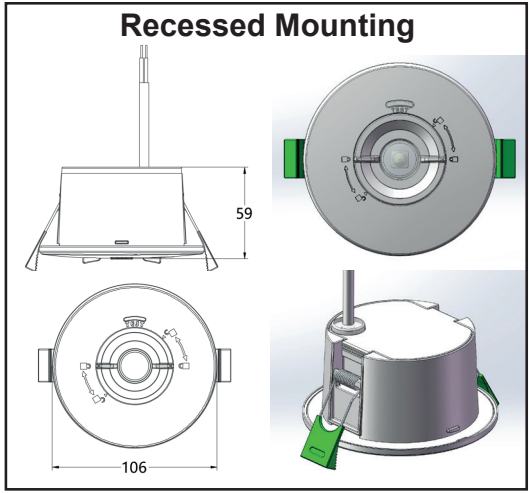
- Two click on lenses supplied for different Light Distributions:
Open Lens: Beam Angle: 144°, 500Lm +/-10%
Corridor Lens: Beam Angle: 128°, 425Lm +/-10%
- Surface Mounting accessory also included
- Wattage: 5W
- IP Rating: IP65
- Colour Temp: 5700K +/-355k
- Voltage: 220-240V
- Size: 106 x 64mm
- Battery Type: LifeP04, 3.2V, 4.0Ah
- Non Maintained
- Battery Duration: 3 Hrs
- Battery Warranty: 3 Yrs
- Compliant with EN62034

WIRING DIAGRAM



OPERATION / MAINTENANCE

This product has a 5 year warranty. This warranty does not include batteries or fuses. There is a 3 year warranty for the LiFe P04 Battery. P04 LIFE batteries should be changed after 3 years.



EMERGENCY TESTING

After connecting the mains supply check the following:

1. The unit should be left on charge for a minimum of 24 hours before testing the emergency mode
2. There is one green indicator in the middle. After power is on, the LED indicator will be on. The LED indicator is off when the fixture is in emergency mode
3. To simulate normal mains supply failure, operate your key switch
4. The lamp will now light under emergency conditions
5. When the unit no longer meets its rated duration of operation, the battery pack must be replaced with a battery of the same type, voltage and AMP-hour rating
6. All Emergency lighting tests must be logged. The Emergency lighting logbook must be provided in order to be covered by any warranties.



EU DECLARATION OF CONFORMITY

Manufacturers Name: Solas Geal Distribution
Unit 7/8 Ashbourne Business Centre, Ballybin Road, Ashbourne, Co. Meath, A84 YP58.

This declaration of conformity is issued under the sole responsibility of the manufacturer.

Product Description:

Surface/Recessed 5W Emergency Spotlight, Non-Maintained, Self-Test
LiFe P04 4.0Ah 3.2V Battery

Model Code:

SEM-SWDL

The product/model of the declaration described above is in conformity with the relevant Community harmonisation legislation.

Low Voltage Directive (2014/35/EU)

EMC (2014/30/EU)

Complies with Irish Standard: I.S. 3217:2023

The product/model of the declaration described above is in conformity with the standards and technical specifications listed below:

**EN 62034, EN IEC 60598-2-22:2022,
EN IEC 61347-2-7:2012+A1:2019+A2:2022 & ISO 7010**



Signed:

Date: 10/9/25

Place of Issue: Republic of Ireland

