

DISASSEMBLY INSTRUCTIONS



Installation & Self Test Instructions SLIM EMERGENCY EXIT BOX

PRODUCT CODE: SEM-SL EXB

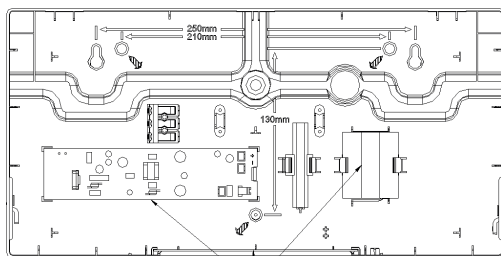
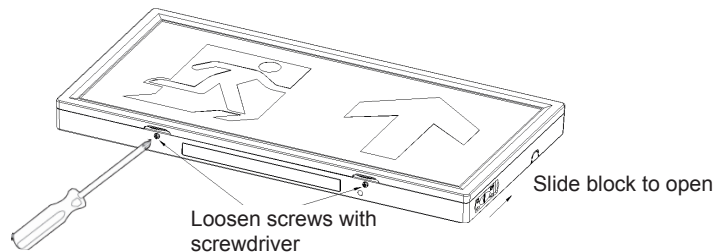


Product end of life instruction.

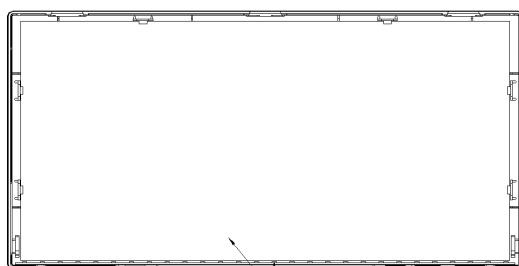
This Lighting product is in the scope of EU 2019/2020 directive on Waste Electrical and Electronic Equipment (WEEE). This product must be disposed of, according to the legislation. This document is intended for use by end of life recyclers or treatment facilities. It provides the basic information to assure an appropriate end of life treatment for the components and materials of the product.

Please follow the pictured diagram on the back of this manual showing how to dismantle the product into different components which should be disposed of correctly. These components consist of plastic, metal and electronic materials.

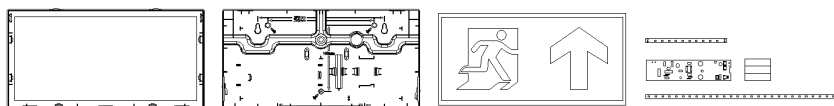
It is the responsibility of the end user to dispose of this product correctly. Contact www.weeeireland.ie or your local council for further information.



Dismantle Driver/LED, Plate/Battery



Dismantle Legend and Led Plate



For more information contact:

Unit 7/8 Ashbourne Business Centre, Ballybin Road, Ashbourne, Co. Meath, Ireland, A84 YP58,
Phone: 00353 1 835 7447



Solas Geal Distribution

Website: www.sgd.ie



Self Test Method: Please ensure this product is tested monthly and half-yearly

MODE	METHOD FOR MODE	IF	LED INDICATOR STATUS	BEEP SOUND	RESULT
Mains ON	No Action Needed	Battery Ok	Green (Permanently On)	OFF	Green LED
	No Action Needed	Battery Fault	Red (Flashes every 1 second)	Beep every 45 Seconds*	Red LED, Loud Beep sound*
	No Action Needed	LED Fault*	Amber (Flashes every 1 second)*	Beep every 45 Seconds*	Amber LED, Loud Beep Sound

Monthly self test battery discharge (discharges the battery for 10 seconds)	Self Testing	Battery Ok	All Indicators Off	OFF	Green LED
		Battery Fault	Red (Flashes every 1 second)	Beep every 45 seconds	Red LED, Loud Beep sound
		LED Fault	Amber (Flashes every 1 Second)	Beep every 45 seconds	Amber LED, Loud Beep Sound

Half yearly self test battery discharge (discharges the battery for 3 hours)	Self Testing	Battery Ok	All Indicators Off	OFF	Green LED
		Battery Fault	Red (Flashes every 1 second)	Beep every 45 seconds	Red LED, Loud Beep sound
		LED Fault	Amber (Flashes every 1 Second)	Beep every 45 seconds	Amber LED, Loud Beep Sound

Mains Failure	No action needed Luminaire enters 3 hour emergency mode	Battery Ok	All Indicators Off	OFF	
---------------	---	------------	--------------------	-----	--

Note:

- No AC power will cause luminaire to enter Emergency mode
- After a repair, please connect AC power and perform a test (for performance confirmation).
- If the battery and LED board failure simultaneously, the red LED will flash.
- Any beep sound will stop after correct maintenance or repair.
- Manual testing will not affect the monthly and half-yearly testing schedule

Self Test

LED Light Status

Green LED Constant

Red LED (flashes every 1 second)

Amber LED (flashes every 1 second)

Mains Failure

Beep Sound

OFF

Beep every 45 seconds

Beep every 45 seconds

No indicator

Status

Battery Charging, No faults, Mains On

Battery Fault

LED Fault

Check Power Supply

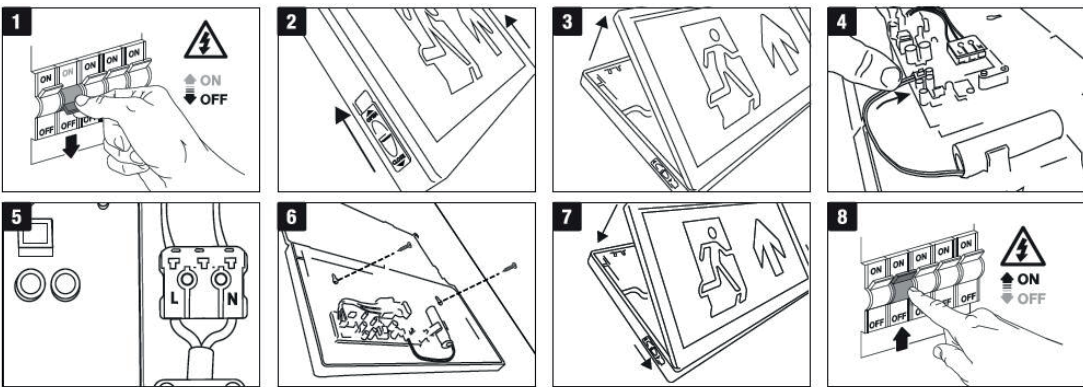


Emergency Installation and Inspection

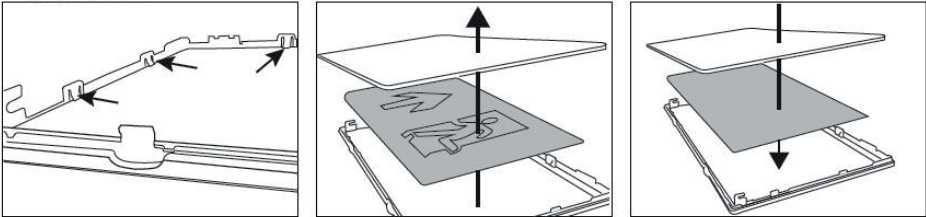
Installation / Test Record	Serial/ Luminaire Number:			
	Installed By:		Date:	
	Commissioned By:		Date:	

Monthly test	Year 1		Year 2		Year 3*		Year 4	
	Signed	Date	Signed	Date	Signed	Date	Signed	Date
1								
2								
3								
4								
5								
6								
7								
8								
9								
10								
11								
12								

*Recommended Battery Change Life P04



CHANGING LEGEND



Important Installation Information

1. Installation should be carried out in accordance with the current edition of the National Wiring Regulations. If in doubt, consult a qualified electrician
2. Maximum Input Voltage - 220V-240V AC 50/60Hz
3. Connect the battery pack to the PCB by connecting the female socket on the battery wires to the male plug mounted on the PCB, ensuring the correct orientation
4. Ensure that all electrical connections are tight with no loose strands
5. Before commencing installation or maintenance, ensure electricity is switched off at the mains.
6. Class II, double insulated and earth is not required
7. This luminaire is not dimmable
8. All green charge indicator LED are illuminated when the battery is charging. During situations where there is no power from mains electricity and the battery is discharging, all green charge indicator LEDs will be off.

EMERGENCY TESTING

After connecting the mains supply check the following:

1. The unit should be left on charge for a minimum of 24 hours before testing the emergency mode
2. There is one green indicator in the middle. After power is on, the LED indicator will be on. The LED indicator is off when the fixture is in emergency mode
3. To simulate normal mains supply failure, operate your key switch (switch version).
4. The lamp will now light under emergency conditions
5. When the unit no longer meets its rated duration of operation, the battery pack must be replaced with a battery of the same type, voltage and AMP-hour rating
6. All Emergency lighting tests must be logged. The Emergency lighting logbook must be provided in order to be covered by any warranties.



EU DECLARATION OF CONFORMITY

Manufacturers Name: Solas Geal Distribution
Unit 7/8 Ashbourne Business Centre, Ballybin Road, Ashbourne, Co. Meath, A84 YP58.

This declaration of conformity is issued under the sole responsibility of the manufacturer.

Product Description:

Slim Exit Sign IP20 4W, LiFe P04 1500mAh 3.2V Battery
Maintained/Non-Maintained/Self Test

Model Code:

SEM-SL-EXB P04

The product/model of the declaration described above is in conformity with the relevant
Community harmonisation legislation:

Low Voltage Directive (2014/35/EU)

EMC (2014/30/EU)

Complies with Irish Standard: I.S. 3217:2023

The product/model of the declaration described above is in conformity with the standards
and technical specifications listed below:

EN 62034, EN IEC 60598-2-22:2022

EN IEC 61347-2-7:2012+A1:2019+A2:2022 & ISO 7010



Signed:

Date: 10/9/25

Place of Issue: Republic of Ireland

