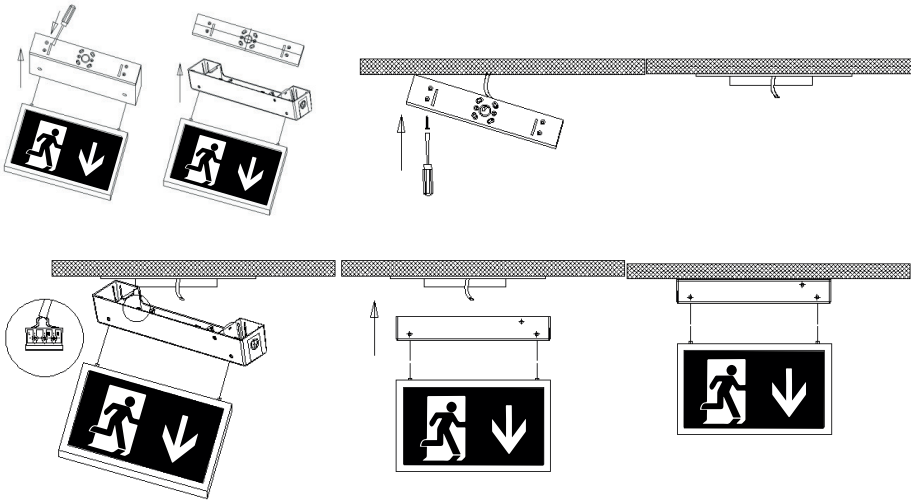




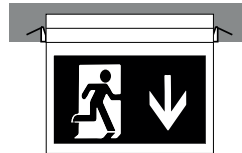
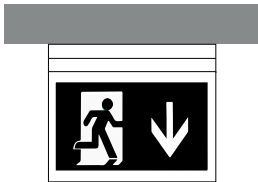
Installation Instructions 4 in 1 LED EXIT SIGN

PRODUCT CODE: SEM-EXSIGN



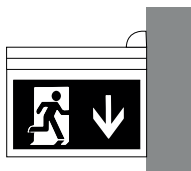
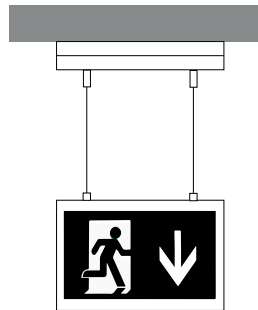
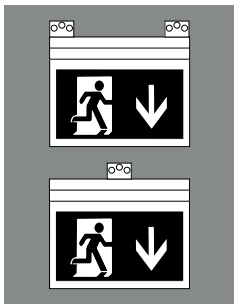
Flush Ceiling Mounting

Recessed Ceiling Mounting



Wall Mounting

Suspension Mounting



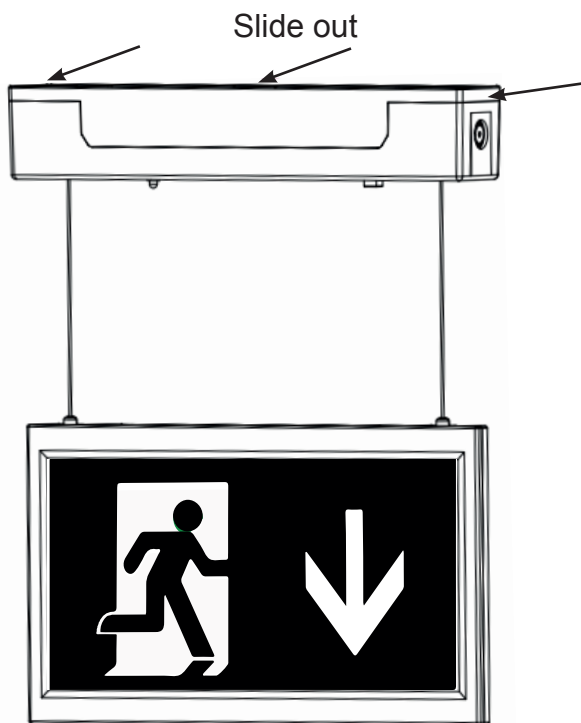
DISASSEMBLY INSTRUCTIONS

Product end of life instruction.

This Lighting product is in the scope of EU 2019/2020 directive on Waste Electrical and Electronic Equipment (WEEE). This product must be disposed of, according to the legislation. This document is intended for use by end of life recyclers or treatment facilities. It provides the basic information to assure an appropriate end of life treatment for the components and materials of the product.

Please follow pictured diagram on the back of this manual showing how to dismantle the product into different components which should be disposed correctly. These components would consist of plastic, metal and electronic materials.

It is the responsibility of the end user to dispose of this product correctly. www.weeireland.ie or contact your local council for further information.



For more information contact:



Solas Geal Distribution

Unit 7/8 Ashbourne Business Centre, Ballybin Road, Ashbourne, Co. Meath, Ireland, A84 YP58,

Phone: 00353 1 835 7447

Website: www.sgd.ie



EU DECLARATION OF CONFORMITY

Manufacturers Name: Solas Geal Distribution
Unit 7/8 Ashbourne Business Centre, Ballybin Road, Ashbourne, Co. Meath, A84 YP58.

This declaration of conformity is issued under the sole responsibility of the manufacturer.

Product Description:

Hanging Emergency Exit Sign IP20 3W
Ni-Cd 3.6V 800mAh Battery, Maintained

Model Code:

SEM-EXSIGN

The product/model of the declaration described above is in conformity with the relevant
Community harmonisation legislation:

Low Voltage Directive (2014/35/EU)
EMC (2014/30/EU)

Complies with Irish Standard: I.S. 3217:2023

The product/model of the declaration described above is in conformity with the standards
and technical specifications listed below:

EN IEC 60598-2-22:2022

EN IEC 61347-2-7:2012+A1:2019+A2:2022 & ISO 7010



Signed:

Date: 10/9/25

Place of Issue: Republic of Ireland

