

Emergency Installation and Inspection

Installation / Test Record	Serial/ Luminaire Number:			
	Installed By:		Date:	
	Commissioned By:		Date:	

Monthly test	Year 1		Year 2*		Year 3*		Year 4	
	Signed	Date	Signed	Date	Signed	Date	Signed	Date
1								
2								
3								
4								
5								
6								
7								
8								
9								
10								
11								
12								

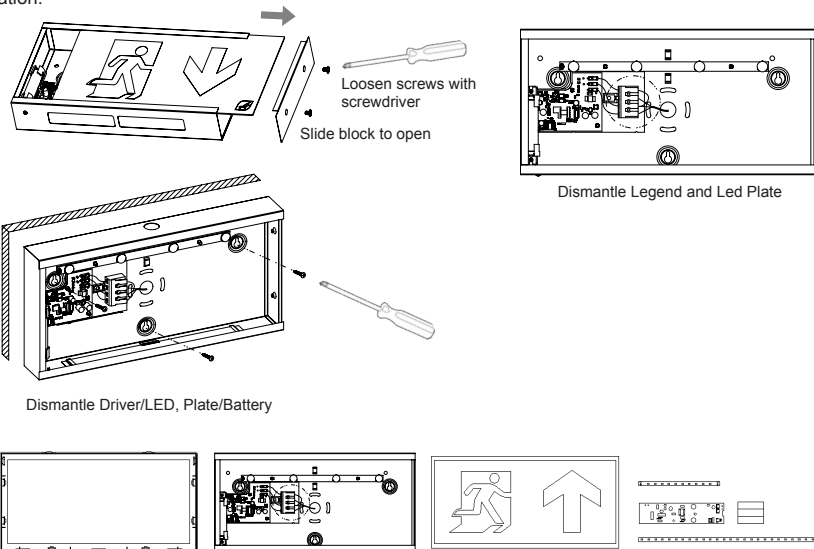
DISASSEMBLY INSTRUCTIONS

Product end of life instruction.

This Lighting product is in the scope of EU 2019/2020 directive on Waste Electrical and Electronic Equipment (WEEE). This product must be disposed of, according to the legislation. This document is intended for use by end of life recyclers or treatment facilities. It provides the basic information to assure an appropriate end of life treatment for the components and materials of the product.

Please follow pictured diagram on the back of this manual showing how to dismantle the product into different components which should be disposed of correctly. These components consist of plastic, metal and electronic materials.

It is the responsibility of the end user to dispose of this product correctly. Contact www.weeeireland.ie or your local council for further information.



For more information contact:

Unit 7/8 Ashbourne Business Centre, Ballybin Road, Ashbourne, Co. Meath, Ireland, A84 YP58,
Phone: 00353 1 835 7447

Unit 32 Junction One Business Park, Valley Road, Birkenhead, Merseyside, UK, CH41 7ED,

UK Ph: 0330 551 7000

Website: www.sgd.ie



Solas Geal Distribution



Installation & Self Test Instructions EMERGENCY EXIT BOX

PRODUCT CODE: SEM-BL-EXB

LUMINAIRE INSTRUCTIONS AND TEST PROCEDURES



INSTALLATION

1. Remove the front legend by removing the two crosshead screws retaining the end plate and sliding the legend plate out.
2. Fix the main exit sign body to the wall having cleared an access hole in the body for the incoming cables.
3. Wire up the luminaire in accordance with wiring regulations. An unswitched 240V A.C. supply must be connected to the Live (L), Earth (E) and Neutral (N) terminals on the PCB. For Maintained operation, connect an additional switched to the 'L1' terminal.
4. Plug battery leads onto the connector on PCB.
5. Slide the legend panel back into the frame and refit the end plate with the two screws.
6. Check operation – restore A.C. supply. For emergency versions check the indicator LED is 'on'. Leave for 30 minutes, remove power and the LED's should illuminate for a few seconds.
7. Restore the A.C. supply and check the LED's operate on mains for maintained operation.

EMERGENCY OPERATION

NON-MAINTAINED (No switched supply connected)

LED's normally off and battery on automatic charge (green LED 'on') when the A.C. supply is healthy. Solid state circuitry automatically switches the emergency LED's on when the A.C. supply is interrupted.

MAINTAINED

The LED's are normally on. The battery is on automatic charge (green LED 'on'). LED's may be switched by independent switched live and will switch on (remain on) to emergency operation when the permanent A.C. supply is interrupted.

MONITORING

Green indicator lamp (LED) normally continuously 'on'. Indicator goes out if permanent A.C. supply or charger fails.

TEMPERATURE Performance figures measured at 25 degrees C.

FAULT FINDING AND CORRECTIVE ACTION

MONITORING LED NOT ILLUMINATED A.C. supply not healthy. Battery not connected. Charger failed.

UNIT NOT MEETING REQUIRED EMERGENCY PERIOD

May need cycling: discharge then recharge for full 24 hours. Retest. Battery pack may need replacing if emergency duration is still not met.

LEDS NOT FULLY ILLUMINATED

If one or more of the LED's do not illuminate the printed circuit board may be damaged and will require replacing.

RECOMMENDED ROUTINE TEST PROCEDURE

Recommended routine test procedures in line with BS 5266 & BS EN 50172 & I.S3217:2013-A1:2017

The following test is designed to ensure the continued protection of your premises and occupants. Because of the possibility of a failure of the normal lighting supply occurring shortly after a period of testing, all tests should whenever possible, be undertaken at times of least risk, e.g. during daylight hours.

ONCE A DAY

Visual inspection of battery charge LED.

ONCE A MONTH

Each unit should be energised from its battery for about 15 minutes by simulation of a failure of the normal lighting supply to ensure the LED's operate in the emergency condition.

ONCE A YEAR

Each unit should be energised from its battery for the full rated duration. Inspect the LED's and ensure that they all operate with similar light output. The LED's have a life expectancy of over 10 years but it is recommended that the LED PCB is replaced at after 10 years in order to retain the design photometric characteristics.



IMPORTANT INFORMATION

It is recommended that the luminaires are installed and fitted by a qualified electrician, ensuring the installation complies to current IEE wiring regulations. These instructions should be read carefully and retained after installation for future reference and maintenance. Do not install this product on damp or newly plastered surfaces. The LEDs in this fitting are not replaceable. Ensure all electrical connections are secure and that there are no loose strands. This product is NOT dimmable. This is a Class I product and MUST be earthed.

WARNING

This product must be disconnected from the circuit if subjected to any high voltage or insulation resistance testing. Irreparable damage will occur if this instruction is not followed.

Recommended routine test procedures are in line with BS 5266 & BS EN 50172 & I.S3217:2013-A1:2017

Daily check - check that the status GREEN LED indicator is illuminated.

Monthly functional test - simulate a mains supply failure for approx. 30 secs by operation of key switch or switching off a circuit breaker. Ensure normal supply is restored after test and the indicator status LED is illuminated.

Twice yearly conduct a one hour duration test - simulate a mains supply failure for one hour continuous test by operation of key switch or switching off circuit breaker. Ensure normal supply is restored after test and the indicator status LED is illuminated.

Annual full three hour duration test - conduct a three hour continuous duration test. Simulate a mains supply failure for three hour continuous test by operation of key switch or switching off circuit breaker. Ensure normal supply is restored after test and the indicator status LED is illuminated.

If the luminaire fails any of the above tests, please contact a qualified electrician. See overleaf for test record sheet.

GENERAL

The LEDs fitted in this product are non-replaceable. The unit should be recycled in the correct manner when it reaches the end of its life. Clean with a soft dry cloth only, do not use aggressive cleaning products or solvents which may damage the fitting.

WARRANTY

This product has a warranty of 3 years [excluding the battery] from date of purchase. Failure to install this product in accordance with the current edition of the IEE Wiring Regulations, improper use, or removal of the batch codes will invalidate the warranty. If this product should fail within its warranty period it should be returned to the place of purchase for a free of charge replacement.

INSTALLATION STEPS

STEP 1 Isolate the mains supply before connecting. Unpack the luminaire and check that you have all the tools to install the luminaire safely and in compliance with current electrical standards. Ensure there are no obstructions.

STEP 2 Remove fixings holding end panel in place - 2 positions.

STEP 3 Once end panel has been removed, slide out fascia legend.

STEP 4 Select a suitable cable entry point in the body of the luminaire and feed the mains cable through the grommet/cable gland to prevent damage to the cable.

STEP 5 Position and fix the luminaire body to a suitable solid surface. (a) Drill holes (b) Fit Rawl Plugs (c) Fix into position. Do not install this fitting on newly plastered areas. Fix in 3 positions.

STEP 6 Ensure that the luminaire has a continuous live supply to "L 1" (Un-Switched Live). The "Maintained" emergency luminaire can be "switched" via connection "L" (Switched Supply). Terminate the mains cable into the terminal block mounted on the PCB ensuring that the correct polarity is observed and the luminaire is fully earthed. Ensure all conductors are fully sleeved and insulated, see FIG.1.

STEP 7 Ensure that the battery cells are connected.

STEP 8 Replace fascia legend and end panel and secure in place.

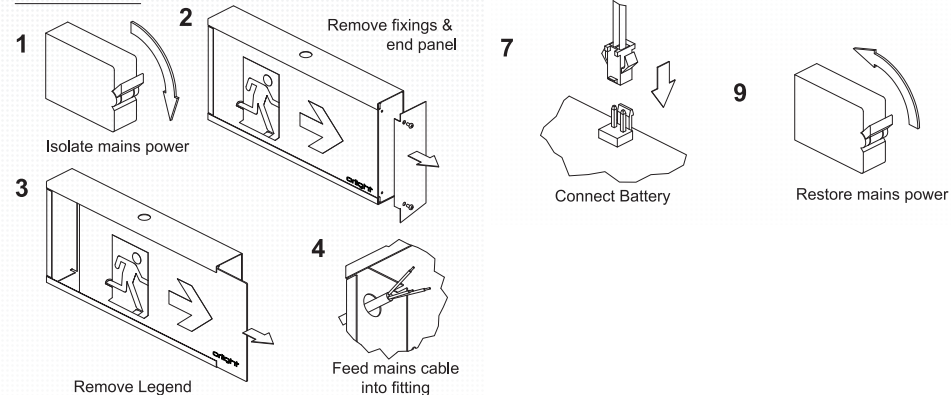
STEP 9 Turn on mains power supply and test luminaire for correct operation.

EMERGENCY TERMINATIONS MAINTAINED (FIG.1)



THIS IS A CLASS I PRODUCT AND MUST BE EARTHED.

INSTALLATION



Self-Test

Self-Test fittings perform a self-commissioning test at first power on. After charging for 24 hours a full duration test (3 hours) is performed. Initial function and duration tests are randomly generated.

They are then performed in accordance with standard requirements (every 30 days for function tests and every 52 weeks for duration tests).

A single bi-colour indicator LED is fitted in all Self-Test products. This LED is clearly visible for manual inspection. It indicates the module status.

The LED shows permanent green or flashing green when conditions are normal and flashing red if a fault condition is present.

Function test

A function test is a 2 minutes test that simulates a mains failure and checks the operation of the emergency light source from the battery supply.

The local indicator LED slow flashes green whilst the 2 minutes function test is in progress.

If there is a failure during a function test the local indicator LED changes to a flashing red.

Duration test

A duration test simulates a mains failure. It also checks the operation of the emergency light source from the battery supply for the rated duration of the module.

The local indicator LED fast flashes green whilst the duration test is in progress.

If there is a failure during a duration test the local indicator LED either changes to flashing red.

The battery is required to be fully charged before a duration test can be started.

The test button of the unit has the following functions		
Test Button	Green LED	Status
Press for about 1s	Off	Emergency mode for 1 second
Press for about 5s	Slow flash	Function for 30 seconds
Press for about 7s	Fast flash	3 hour duration test
Press for about 10s		End the duration test

Please refer to this chart for more complete description / fault indication	
Test Button	Status
Green LED Constant	Mains On / No Fault
Green LED Slow Flash	Function for 2 minutes
Green LED Fast Flash	3 hour duration Test
Red LED 1 Flash	Battery Fault
Red LED 2 Flash	Lamp Fault
Red LED 3 Flash	Duration Test Fault



EU DECLARATION OF CONFORMITY

Manufacturers Name: Solas Geal Distribution
Unit 7/8 Ashbourne Business Centre, Ballybin Road, Ashbourne, Co. Meath, A84 YP58.

Declaration Number:
102-SEM BL EXB

This declaration of conformity is issued under the sole responsibility of the manufacturer.

Products:
Emergency Led Exit Box IP20 Black LiFePO4 Maintained & Non-Maintained Self-Test

Model Number:
SEM BL EXB

The product/model of the declaration described above is in conformity with the relevant
Community harmonisation legislation:

Low Voltage Directive (2014/35/EU)
EMC (2014/30/EU)

The product/model of the declaration described above is in conformity with the standards
and technical specifications listed below:

EN55015:2019/A11:2020, EN61000-3-2:2019, EN61000-3-3:2013/A1:2019, EN61547:2009,
EN60598-2-22:2014, EN60598-1:2015+A1:2018



Signed:

Date:

Place of Issue: Republic of Ireland

