

# DISASSEMBLY INSTRUCTIONS



## Installation Instructions EMERGENCY SELF TESTING BULKHEAD PRODUCT CODE: SEM-BH P04

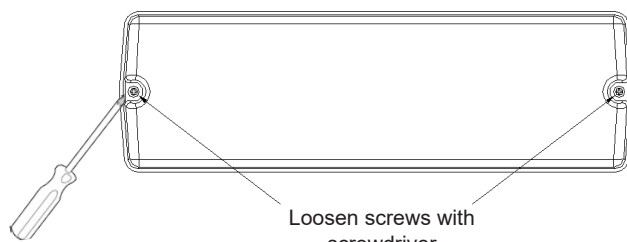


### Product end of life instruction.

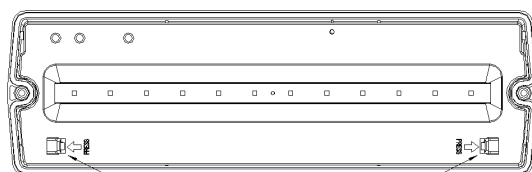
This Lighting product is in the scope of EU 2019/2020 directive on Waste Electrical and Electronic Equipment (WEEE). This product must be disposed of, according to the legislation. This document is intended for use by end of life recyclers or treatment facilities. It provides the basic information to assure an appropriate end of life treatment for the components and materials of the product.

Please follow pictured diagram on the back of this manual showing how to dismantle the product into different components which should be disposed of correctly. These components consist of plastic, metal and electronic materials.

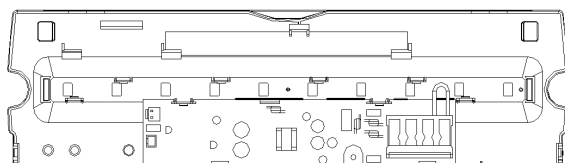
It is the responsibility of the end user to dispose of this product correctly. Contact [www.weeeireland.ie](http://www.weeeireland.ie) or your local council for further information.



Loosen screws with screwdriver



Dismantle middle plate



Dismantle battery, driver and LED plate

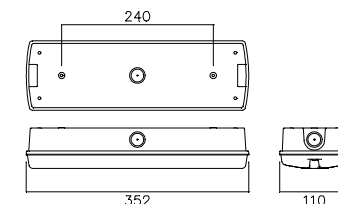


**SAFETY** This is a mains powered product. It is designed to be installed by a qualified electrician and in accordance with the applicable building and electrical regulations. Before installation or maintenance the electrical supply to the product must be isolated.

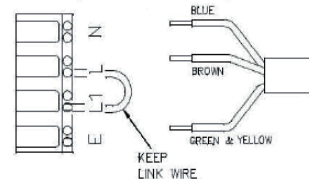
**WARRANTY** This product is warranted to be free of defects in materials, design and workmanship for 5 years from the date of purchase. This warranty does not include batteries or consumable items such as fuses. The NiCd Battery has a 2 year warranty. The LiFeP04 has a 3 year warranty.

### LUMINAIRE INSTALLATION

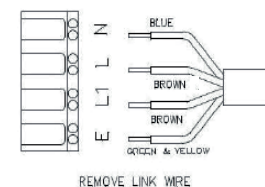
1. Remove diffuser by unscrewing the two screws.
2. Hinge the gear tray open by pushing apart the two retaining clips.
3. Screw fix the base to the chosen mounting surface using the two screw fixing points in the base moulding at 240mm centres. These should be drilled to a size to suit the fixing screws.  
**Note: It is responsibility of the installer to ensure these fixing points are sealed to ensure the IP65 rating is maintained. The use of a silicone sealant is recommended.**
4. Select one of the available cable entry points on the base (one on either end, on one side, or through the bottom) & drill to suitable size to suit IP65 rated (or better) cable entry gland (not provided).
5. Install cable entry gland.
6. Depending on which variant of the product you have, determine your required function & route the appropriate power supply cable to the terminal block & terminate as shown.



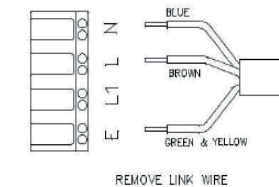
#### FOR MAINTAINED OPERATION (NON-SWITCHABLE)



#### FOR MAINTAINED OPERATION (SWITCHABLE)



#### FOR NON-MAINTAINED OPERATION



7. If applicable, tighten cable gland to seal & secure mains cable.
8. Connect the battery pack to the PCB by connecting the female socket on the battery wires to the male plug mounted on the PCB, ensuring the correct orientation.
9. Enter the "Installation Date" in the appropriate place on the battery pack label.
10. Hinge the gear tray closed & snap fit of clips to secure.
11. Refit the diffuser & secure using the two screws.
12. Reconnect the power supply & check the green LED charge indicator illuminates.
13. The batteries should be allowed to charge for at least 24 hours before carrying out a full discharge test to check they are charging correctly & the maintained duration is being achieved.

### OPERATION / MAINTENANCE

1. NiCd battery life is 2 years, after which time it should be replaced with a suitable equivalent. The P04LiFe battery should be changed after 3 years.
2. This luminaire **MUST** be disconnected before it is subjected to any high voltage or insulation resistance testing, otherwise irreparable damage will occur to luminaire components.
3. Ensure cleanliness of luminaires is maintained so as not to affect performance.

### RECESSED MOUNT KIT INSTALLATION –

1. Prepare ceiling by cutting suitable size aperture. We recommend 360mm x 110mm.
2. Bend springs up to vertical & push the back of the frame up through aperture, then allow the springs to snap back against the top of the ceiling to retain.
3. Drill out the two fixing points at 240mm centres in the base of the luminaire & then secure the base to the frame using 2-off M4 screws aligned with the tapped holes on the brackets of the frame.
4. Other installation details as per LUMINAIRE INSTALLATION section above.

For more information contact:

Unit 7/8 Ashbourne Business Centre, Ballybin Road, Ashbourne, Co. Meath, Ireland, A84 YP58,  
Phone: 00353 1 835 7447

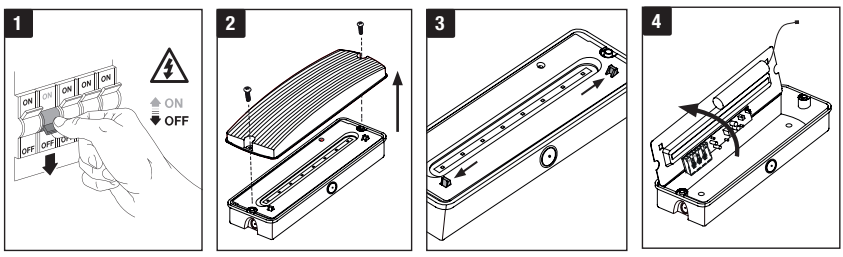
Unit 32 Junction One Business Park, Valley Road, Birkenhead, Merseyside, UK, CH41 7ED,  
UK Ph: 0330 551 7000

Website: [www.sgd.ie](http://www.sgd.ie)



Solas Geal Distribution





**DROP DOWN ATTACHMENT INSTALLATION –**

1. Remove the standard diffuser on the main product by undoing the two screws.
2. Install the Drop Down Attachment on the main luminaire body & secure using the two screws.
3. Apply the required emergency legends (supplied with the attachment) to both sides of the attachment.

**TESTING FOR EMERGENCY LUMAIRES**

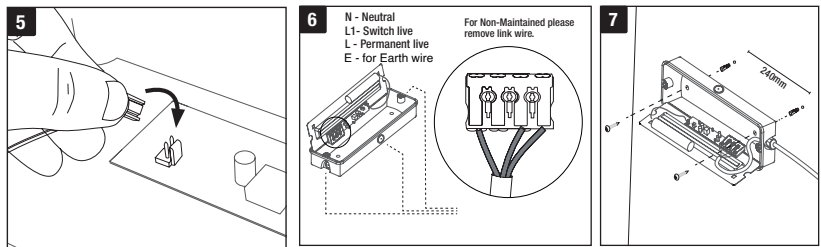
Recommended routine test procedures in line with U.K: BS 5266 & BS EN 50172 & Ireland: I.S 3217:2013 -A1:2017

**Monthly Functional Test**

- Simulate a mains supply failure by isolating the circuit (ensuring if it is safe to do so) or by way of a test key switch if fitted into the circuit.
- Do this for a period of time sufficient to check that the light source illuminates from the battery supply.
- Once complete, ensure the normal supply is restored & that the green LED charge indicator illuminates.
- Log result/comments in the Testing Log Book.

**Annual Discharge Test**

- Simulate a mains supply failure by isolating the circuit (ensuring if it is safe to do so) or by way of a test key switch if fitted into the circuit.
- This should be for the full 3-hour rated duration.
- Check that the light source illuminates & remains illuminated for the full rated duration period.
- Once complete, ensure the normal supply is restored & that the green LED charge indicator illuminates.
- Log result/comments in the Testing Log Book.



**TESTING LOG BOOK**

Luminaire Type: ..... Luminaire Location/No.: .....

MONTH	TEST	FIRST YEAR		SECOND YEAR <small>recommend Battery Change (NiCd only)</small>		THIRD YEAR <small>recommend Battery Change (LiFePO4 only)</small>		FOURTH YEAR		FIFTH YEAR	
		Signed	Date	Signed	Date	Signed	Date	Signed	Date	Signed	Date
1	FUNCTIONAL										
2	FUNCTIONAL										
3	FUNCTIONAL										
4	FUNCTIONAL										
5	FUNCTIONAL										
6	FUNCTIONAL										
7	FUNCTIONAL										
8	FUNCTIONAL										
9	FUNCTIONAL										
10	FUNCTIONAL										
11	FUNCTIONAL										
12	DISCHARGE										

Installed By: ..... Installed Date: .....

Contact Details: .....  
.....

**Self Test Method:** Please ensure this product is tested Monthly and Half Yearly

MODE	METHOD FOR MODE	IF	LED INDICATOR STATUS	BEEP SOUND	RESULT
Mains ON	No Action Needed	Battery Ok	Green (Permanently On)	OFF	Green LED
	No Action Needed	Battery Fault	Red (Flashes every 1 second)	Beep every 45 Seconds*	Red LED, Loud Beep sound*
	No Action Needed	LED Fault*	Amber (Flashes every 1 second)*	Beep every 45 Seconds*	Amber LED, Loud Beep Sound
Monthly self test battery discharge (discharges the battery for 10 seconds)	Self Testing	Battery Ok	All Indicators Off	OFF	Green LED
	Self Testing	Battery Fault	Red (Flashes every 1 second)	Beep every 45 seconds	Red LED, Loud Beep sound
	Self Testing	LED Fault	Amber (Flashes every 1 Second)	Beep every 45 seconds	Amber LED, Loud Beep Sound
Half yearly self test battery discharge (discharges the battery for 3 hours)	Self Testing	Battery Ok	All Indicators Off	OFF	Green LED
	Self Testing	Battery Fault	Red (Flashes every 1 second)	Beep every 45 seconds	Red LED, Loud Beep sound
	Self Testing	LED Fault	Amber (Flashes every 1 Second)	Beep every 45 seconds	Amber LED, Loud Beep Sound
Mains Failure	No action needed Luminaire enters 3 hour emergency mode	Battery Ok	All Indicators Off	OFF	

**Note:**

- No AC power will cause luminaire to enter Emergency mode
- After a repair, please connect AC power and perform a test (for performance confirmation).
- If the battery and LED board failure simultaneously, the red LED will flash.
- Any beep sound will stop after correct maintenance or repair.
- Manual testing will not affect the monthly and annual testing schedule.
- During non-maintained mode, if the battery is faulty, the LED indicator will light red and beep. If the LEDs on the heads are faulty, this will only be shown on monthly self test, and not before
- All Emergency lighting tests must be logged. The Emergency lighting logbook must be provided in order to be covered by any warranties.

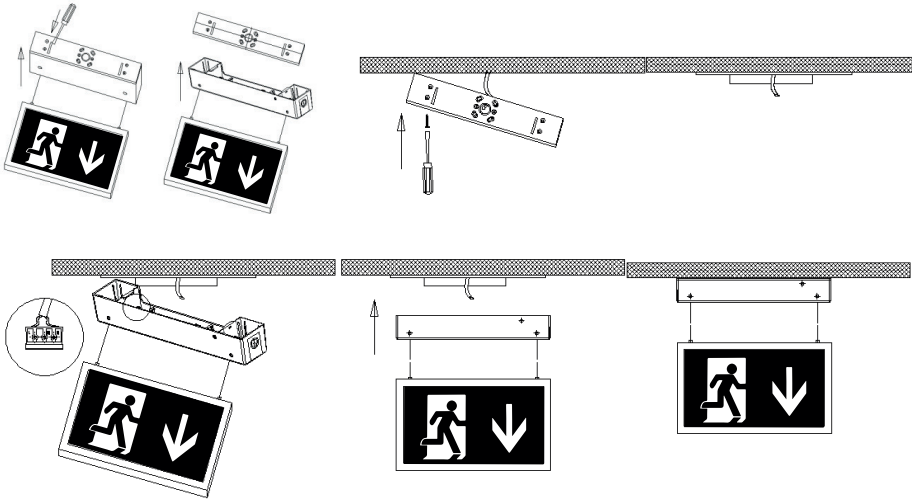
**Self Test**

LED Light Status	Beep Sound	Status
Green LED Constant	OFF	Battery Charging, No faults, Mains On
Red LED (flashes every 1 second)	Beep every 45 seconds	Battery Fault
Amber LED (flashes every 1 second)	Beep every 45 seconds	LED Fault
Mains Failure	No indicator	Check Power Supply



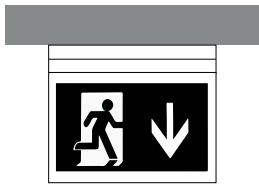
# Installation Instructions 4 in 1 LED EXIT SIGN

PRODUCT CODE: SEM-EXSIGN



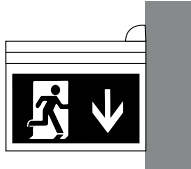
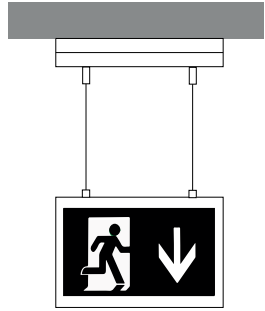
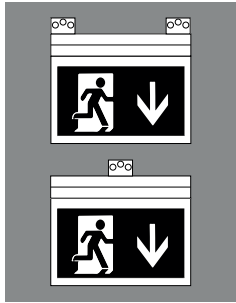
Flush Ceiling Mounting

Recessed Ceiling Mounting



Wall Mounting

Suspension Mounting



# DISASSEMBLY INSTRUCTIONS

## Product end of life instruction.

This Lighting product is in the scope of EU 2019/2020 directive on Waste Electrical and Electronic Equipment (WEEE). This product must be disposed of, according to the legislation. This document is intended for use by end of life recyclers or treatment facilities. It provides the basic information to assure an appropriate end of life treatment for the components and materials of the product.

Please follow pictured diagram on the back of this manual showing how to dismantle the product into different components which should be disposed correctly. These components would consist of plastic, metal and electronic materials.

It is the responsibility of the end user to dispose of this product correctly. [www.weeeireland.ie](http://www.weeeireland.ie) or contact your local council for further information.



For more information contact:



Solas Geal Distribution

Unit 7/8 Ashbourne Business Centre, Ballybin Road, Ashbourne, Co. Meath, Ireland, A84 YP58,  
**Phone:** 00353 1 835 7447

Unit 32 Junction One Business Park, Valley Road, Birkenhead, Merseyside, UK, CH41 7ED,  
**UK Ph:** 0330 551 7000

**Website:** [www.sgd.ie](http://www.sgd.ie)