

Product Information Sheet

COMMISSION DELEGATED REGULATION (EU) 2019/2015 with regard to energy labelling of light sources

Supplier's name or trade mark: Source

Supplier's address: SGD Limited, Unit 7/8 Ashbourne Business Centre, Ballybin Road, Ashbourne, Co. Meath. A84 YP58. Ireland.

Model identifier: E12LED

Type of light source:

Lighting technology used:	LED	Non-directional or directional:	DLS
Light source cap-type (or other electric interface)	MODULE		
Mains or non-mains:	MLS	Connected light source (CLS):	No
Colour-tuneable light source:	No	Envelope:	-
High luminance light source:	No		
Anti-glare shield:	No	Dimmable:	No

Product parameters

Parameter	Value	Parameter	Value
-----------	-------	-----------	-------

General product parameters:

Energy consumption in on-mode (kWh/1000 h), rounded up to the nearest integer	1	Energy efficiency class	D
Useful luminous flux (ϕ_{use}), indicating if it refers to the flux in a sphere (360°), in a wide cone (120°) or in a narrow cone (90°)	130 in Narrow cone (90°)	Correlated colour temperature, rounded to the nearest 100 K, or the range of correlated colour temperatures, rounded to the nearest 100 K, that can be set	6 500
On-mode power (P_{on}), expressed in W	0,5	Standby power (P_{sb}), expressed in W and rounded to the second decimal	-
Networked standby power (P_{net}) for CLS, expressed in W and rounded to the second decimal	-	Colour rendering index, rounded to the nearest integer, or the range of CRI-values that can be set	80
Outer dimensions without separate control gear, light-	Height	64	Spectral power distribution in the range 250 nm to 800 nm, at full-load
	Width	64	
	Depth	60	
			See image in last page

ing control parts and non-lighting control parts, if any (millimetre)			
Claim of equivalent power ^(a)	-	If yes, equivalent power (W)	-
		Chromaticity coordinates (x and y)	0,313 0,337
Parameters for directional light sources:			
Peak luminous intensity (cd)	160	Beam angle in degrees, or the range of beam angles that can be set	15
Parameters for LED and OLED light sources:			
R9 colour rendering index value	2	Survival factor	0,90
the lumen maintenance factor	0,95		
Parameters for LED and OLED mains light sources:			
displacement factor (cos ϕ_1)	0,50	Colour consistency in McAdam ellipses	6
Claims that an LED light source replaces a fluorescent light source without integrated ballast of a particular wattage.	.. ^(b)	If yes then replacement claim (W)	-
Flicker metric (Pst LM)	1,0	Stroboscopic effect metric (SVM)	3,1

(a)'.': not applicable;

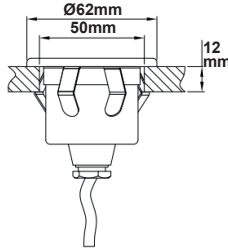
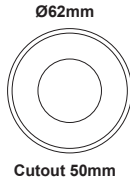
(b)'.': not applicable;



Installation Instructions

LED Colour Choice Deck Light

PRODUCT CODE: E12LED



Please read instructions carefully.

This product should only be installed by a qualified electrician

Please retain these instructions for future reference.

SPECIFICATIONS

- The body of the lamp is made of high-pure aluminum alloy, electrostatic coating and thermostatic hardening.
- Can be used in: interior decoration, outdoor corridors, warehouses and garden
- Ingress Protection: IP65

Item	Rated voltage/V	Rated power/W	Ingress Protection	LED numbers	Protection
E12LED	240V 50Hz	1W	IP65	12LEDS	CLASS:II

INSTALLATION

- Ensure mains supply is switched off.
- Prepare all parts and repairs which the lighting needs.
- Use protective waterproof cable H05RN-F 2*1.0mm²
- Dig a hole as per the cutout dimension.
- Plug the lamp cable into power supply.
- Fasten lamp housing and turn on power.

WARNING

1. This product should only be installed by a qualified electrician
2. Please do not use if there is damage to the housing and glass.



For more information contact:

Unit 7/8 Ashbourne Business Centre, Ballybin Road, Ashbourne, Co. Meath, Ireland, A84 YP58,
Phone: 00353 1 835 7447



Solas Geal Distribution

Unit 32 Junction One Business Park, Valley Road, Birkenhead, Merseyside, UK, CH41 7ED,

UK Ph: 0330 551 7000

Website: www.sgd.ie

Spectrum Test Report

Sample : E12LED
Sample No. : 28
Manufacturer : SGD LIMITED.

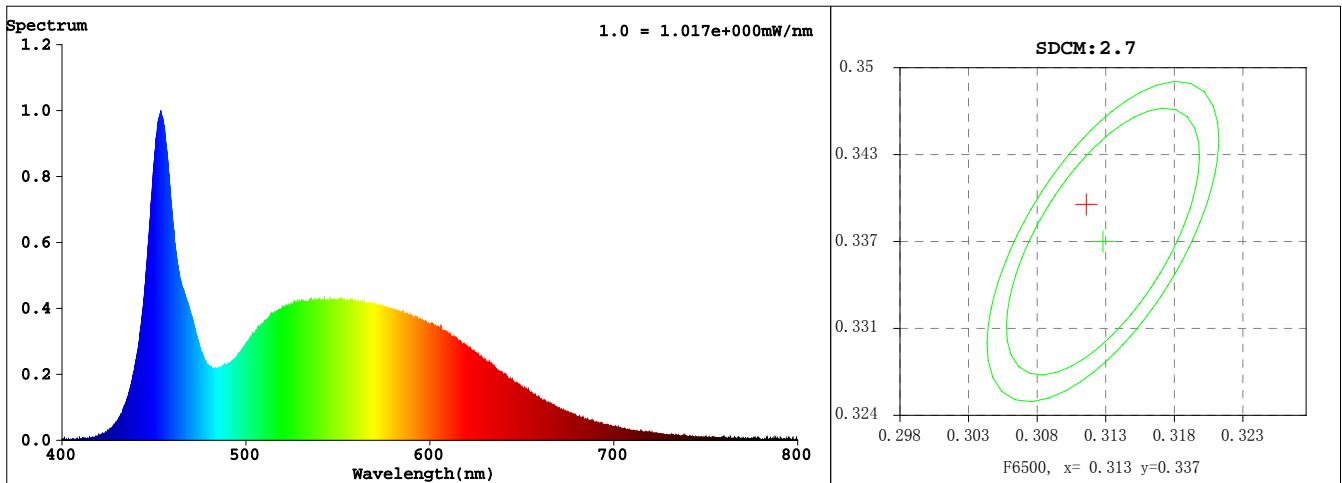
Date : 2021-11-23 08:25:42
Sam. Status :
Instrument : HAAS-2000

Test Condition

Temperature : 25.0Deg
WL Range : 400nm-800nm
Test Mode : Fast Test

RH : 65.0%
IP : 18559 (28%)
T : 5000 ms
Sensitivity : High

Spectrum



Colorimetric Parameters

Chromaticity Coordinate: $x = 0.3118$ $y = 0.3397$ / $u' = 0.1933$ $v' = 0.4738$ ($duv=9.04e-03$)

CCT= 6466K Prcp WL: $L_d=495.5nm$ Purity=6.9%

Peak WL: $L_p=454nm$ FWHM: =18.5nm Ratio:R=13.0% G=81.3% B=5.7%

Render Index: $R_a = 82.1$

R1 =79 R2 =88 R3 =93 R4 =79 R5 =79 R6 =83 R7 =88

R8 =68 R9 =2 R10=71 R11=78 R12=52 R13=82 R14=96 R15=74

Photometric & Radiometric Parameters

Flux = 27.745 lm Eff. : 57.00 lm/W $F_e = 87.755$ mW

(EQE):235.99%

Electrical parameters

V = 240.0 V I = 0.01620 A P = 0.4868 W PF = 0.1252

Kdisp(IEC) = 0 Freq=50.00 Hz



EU DECLARATION OF CONFORMITY

Manufacturers Name: Solas Geal Distribution
Unit 7/8 Ashbourne Business Centre, Ballybin Road, Ashbourne, Co. Meath, A84 YP58.

Declaration Number:
22102802 – E12LED

This declaration of conformity is issued under the sole responsibility of the manufacturer.

Products:
Ground recessed luminaire

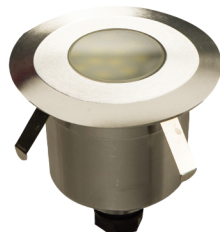
Model Number:
E12LED

The product/model of the declaration described above is in conformity with the relevant community harmonisation legislation:

Directive 2014/35/EU – Low Voltage Directive

The product/model of the declaration described above is in conformity with the standards and technical specifications listed below:

EN 60598-2-13:2006 + A1:2012 + A2:2016; EN IEC
60598-1:2021 + A11:2022; EN 62493:2015; EN IEC
62031:2020; EN 61347-1:2015+A1:2021;
EN 61347-2-13:2014+A1:2017



Signed:

Date:

Place of Issue: Republic of Ireland

