

Product Information Sheet

COMMISSION DELEGATED REGULATION (EU) 2019/2015 with regard to energy labelling of light sources

Supplier's name or trade mark: Source

Supplier's address: SGD Limited, Unit 7/8 Ashbourne Business Centre, Ballybin Road, Ashbourne, Co. Meath. A84 YP58. Ireland.

Model identifier: 3731 WH

Type of light source:

Lighting technology used:	LED	Non-directional or directional:	DLS
Light source cap-type (or other electric interface)	MODULE		
Mains or non-mains:	MLS	Connected light source (CLS):	No
Colour-tuneable light source:	No	Envelope:	-
High luminance light source:	No		
Anti-glare shield:	No	Dimmable:	No

Product parameters

Parameter	Value	Parameter	Value
-----------	-------	-----------	-------

General product parameters:

Energy consumption in on-mode (kWh/1000 h), rounded up to the nearest integer	1	Energy efficiency class	F
Useful luminous flux (ϕ_{use}), indicating if it refers to the flux in a sphere (360°), in a wide cone (120°) or in a narrow cone (90°)	75 in Narrow cone (90°)	Correlated colour temperature, rounded to the nearest 100 K, or the range of correlated colour temperatures, rounded to the nearest 100 K, that can be set	6 500
On-mode power (P_{on}), expressed in W	1,0	Standby power (P_{sb}), expressed in W and rounded to the second decimal	-
Networked standby power (P_{net}) for CLS, expressed in W and rounded to the second decimal	-	Colour rendering index, rounded to the nearest integer, or the range of CRI-values that can be set	80
Outer dimensions without separate control gear, light-	Height	108	Spectral power distribution in the range 250 nm to 800 nm, at full-load
	Width	108	
	Depth	112	
			See image in last page

ing control parts and non-lighting control parts, if any (millimetre)			
Claim of equivalent power ^(a)	-	If yes, equivalent power (W)	-
		Chromaticity coordinates (x and y)	0,337 0,345
Parameters for directional light sources:			
Peak luminous intensity (cd)	90	Beam angle in degrees, or the range of beam angles that can be set	15
Parameters for LED and OLED light sources:			
R9 colour rendering index value	2	Survival factor	0,90
the lumen maintenance factor	0,95		
Parameters for LED and OLED mains light sources:			
displacement factor (cos ϕ_1)	0,50	Colour consistency in McAdam ellipses	6
Claims that an LED light source replaces a fluorescent light source without integrated ballast of a particular wattage.	.. ^(b)	If yes then replacement claim (W)	-
Flicker metric (Pst LM)	1,0	Stroboscopic effect metric (SVM)	3,0

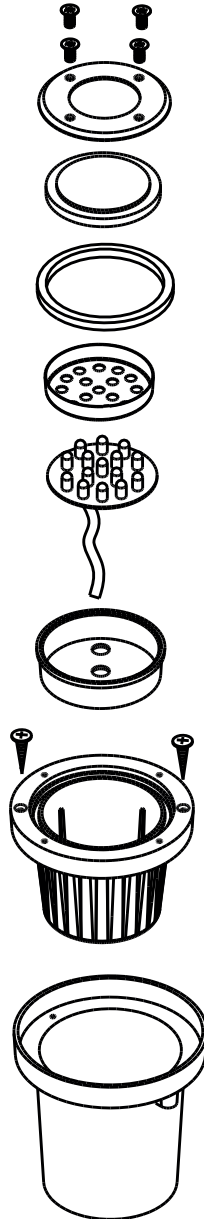
(a)'.': not applicable;

(b)'.': not applicable;



Installation Instructions

PRODUCT CODE: 3731



For more information contact:

Unit 7/8 Ashbourne Business Centre, Ballybin Road, Ashbourne, Co. Meath, Ireland, A84 YP58,
Phone: 00353 1 835 7447



Solas Geal Distribution

Unit 32 Junction One Business Park, Valley Road, Birkenhead, Merseyside, UK, CH41 7ED,
UK Ph: 0330 551 7000

Website: www.sgd.ie

Spectrum Test Report

Sample : 3731 WH
Sample No. : 270
Manufacturer : SGD LIMITED

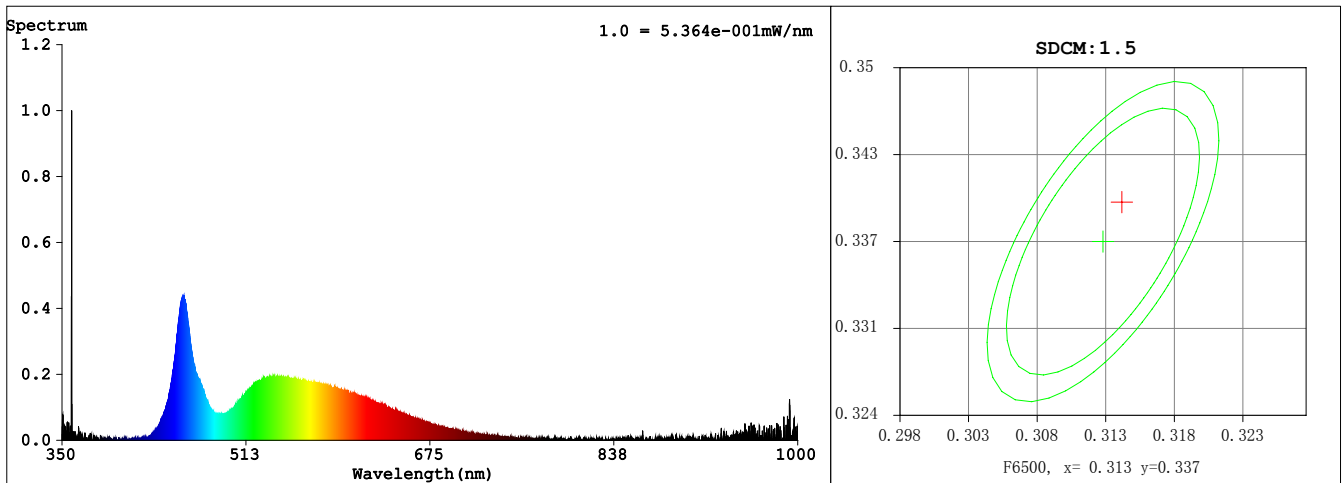
Date : 2021-11-05 08:51:36
Sam. Status :
Instrument : HAAS-2000

Test Condition

Temperature : 25.0Deg
WL Range : 350nm-1000nm
Test Mode : Fast Test

RH : 65.0%
IP : 32929 (50%)
T : 5000 ms
Sensitivity : High

Spectrum



Colorimetric Parameters

Chromaticity Coordinate: $x = 0.3144$ $y = 0.3399$ / $u' = 0.1950$ $v' = 0.4743$ ($duv=7.85e-03$)

CCT= 6331K Prcp WL: $L_d=496.1nm$ Purity=6.0%

Peak WL: $L_p=359nm$ FWHM: =18.9nm Ratio:R=13.3% G=81.1% B=5.6%

Render Index: $R_a = 82.4$

R1 =80 R2 =88 R3 =91 R4 =78 R5 =79 R6 =82 R7 =89

R8 =71 R9 =16 R10=70 R11=75 R12=47 R13=83 R14=95 R15=77

Photometric & Radiometric Parameters

Flux = 57.425 lm Eff. : 51.53 lm/W $F_e = 182.33$ mW

(EQE):331.74%

Electrical parameters

V = 240.0 V I = 0.02440 A P = 1.114 W PF = 0.1903

Kdisp(IEC) = 0 Freq=50.00 Hz



EU DECLARATION OF CONFORMITY

Manufacturers Name: Solas Geal Distribution
Unit 7/8 Ashbourne Business Centre, Ballybin Road, Ashbourne, Co. Meath, A84 YP58.

Declaration Number:

105-3731-WH

105-3731-BE

This declaration of conformity is issued under the sole responsibility of the manufacturer.

Products:

15 LED GROUND Lights 240v 1.2Watt 75 Lumens IP67

Model Number:

3731-WH & 3731-BL

The product/model of the declaration described above is in conformity with the relevant
Community harmonisation legislation:

Low Voltage Directive (2014/35/EU)

EMC (2014/30/EU)

The product/model of the declaration described above is in conformity with the standards
and technical specifications listed below:

EN60598-2-13:2006+A1:12, EN60598-1:2015, EN62493:2015, EN55015:2013/+A1:2015,
EN61547:2009, EN6100-3-2:2014, EN61000-3-3:2013



Signed:

Date:

Place of Issue: Republic of Ireland

